

PETROMIN

20 años al servicio de la minería



Wiggins

Service System



CATÁLOGO
FICHAS TÉCNICAS

SOMOS

PETROMIN
20 años al servicio de la minería

Wiggins
Service System

Avalado por WIGGINS SERVICE SYSTEMS

que pasa a ser la primera, entre otras

fabricas en elegir a PETROMIN LTDA.,

como representante de su marca en chile,

y que confían en la experiencia, capacidad

y responsabilidad para entregar a usuarios

y clientes un servicio de excelencia hoy

PETROMIN LTDA., con más de 20 años en

el mercado, esta posicionado en forma

sólida, pensando en un mejoramiento

continuo, para satisfacer las necesidades y

requerimientos de sus clientes.



**SISTEMA 300 GPM.
PAGINA 1 A LA 17**

1. VR301
2. VR300-5
3. VR304-100A
4. VR306
5. VR325
6. VR308-1
7. VR308-2
8. VR316
9. VR316-25
10. VR321
11. VR304-18
12. VR301-RK
13. ZV10NFB
14. ZV11NFB
15. ZV13NFB
16. JVXFL
17. JVXL

**SISTEMA 150 GPM.
PAGINA 18 A LA 29**

18. ZZ9A1
19. ZZ9A1-K
20. ZN2A
21. ZN2B
22. ZN6B
23. ZNC2A
24. ZNC3L
25. ZNC4L
26. ZN-GAUGE
27. ZS150
28. ZV10F
29. ZV10CF

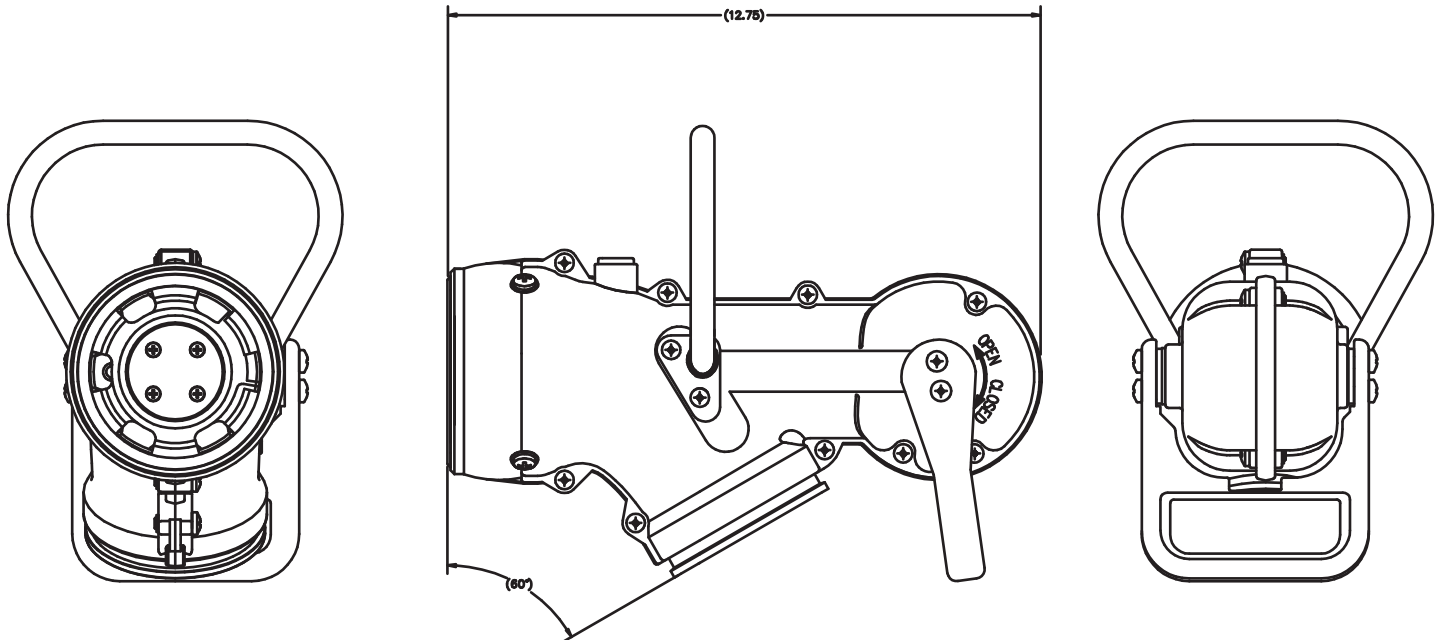
**SISTEMA LUBRICACION ESTANDAR.
PAGINA 30 A LA 37**

30. 6000B12
31. 6005A12
32. C-1807
33. EC280B8
34. EC285A8
35. ONC2A
36. OSP2
37. P-1804

**SISTEMA LUBRICACION R
PAGINA 38 A LA 46**

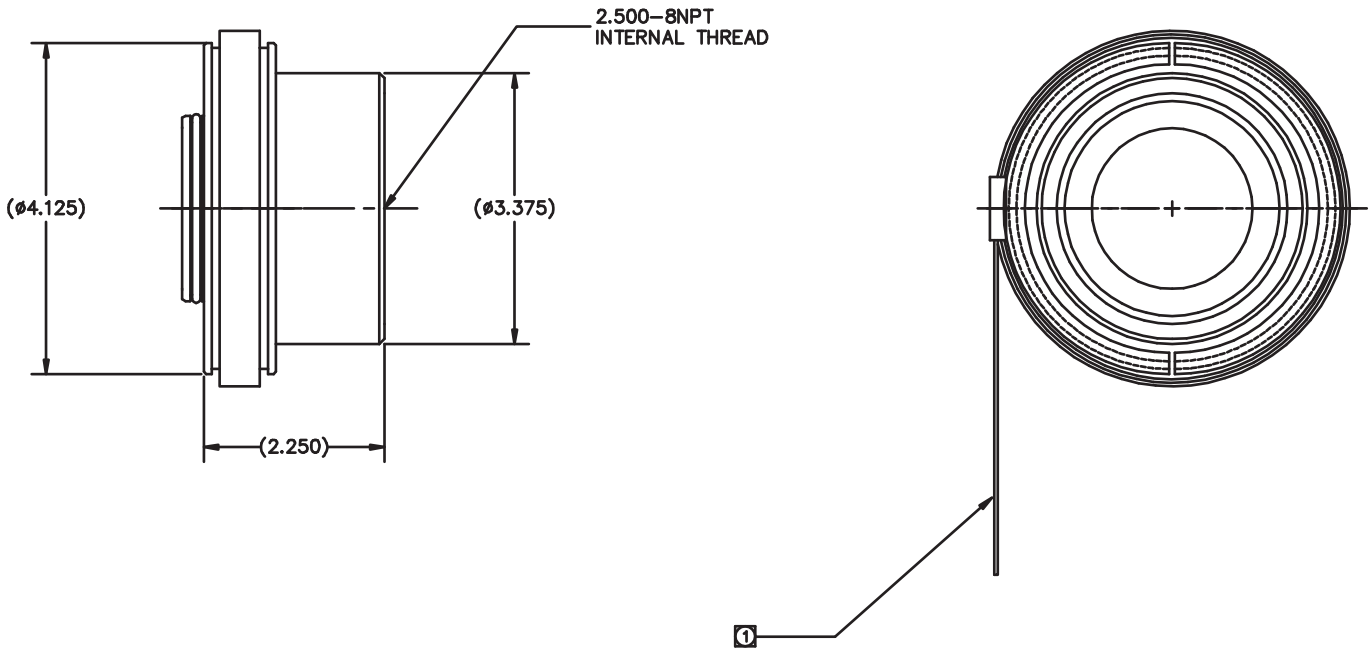
38. R11
39. R12
40. R13
41. R14
42. R15
43. R16
44. R17
45. R18





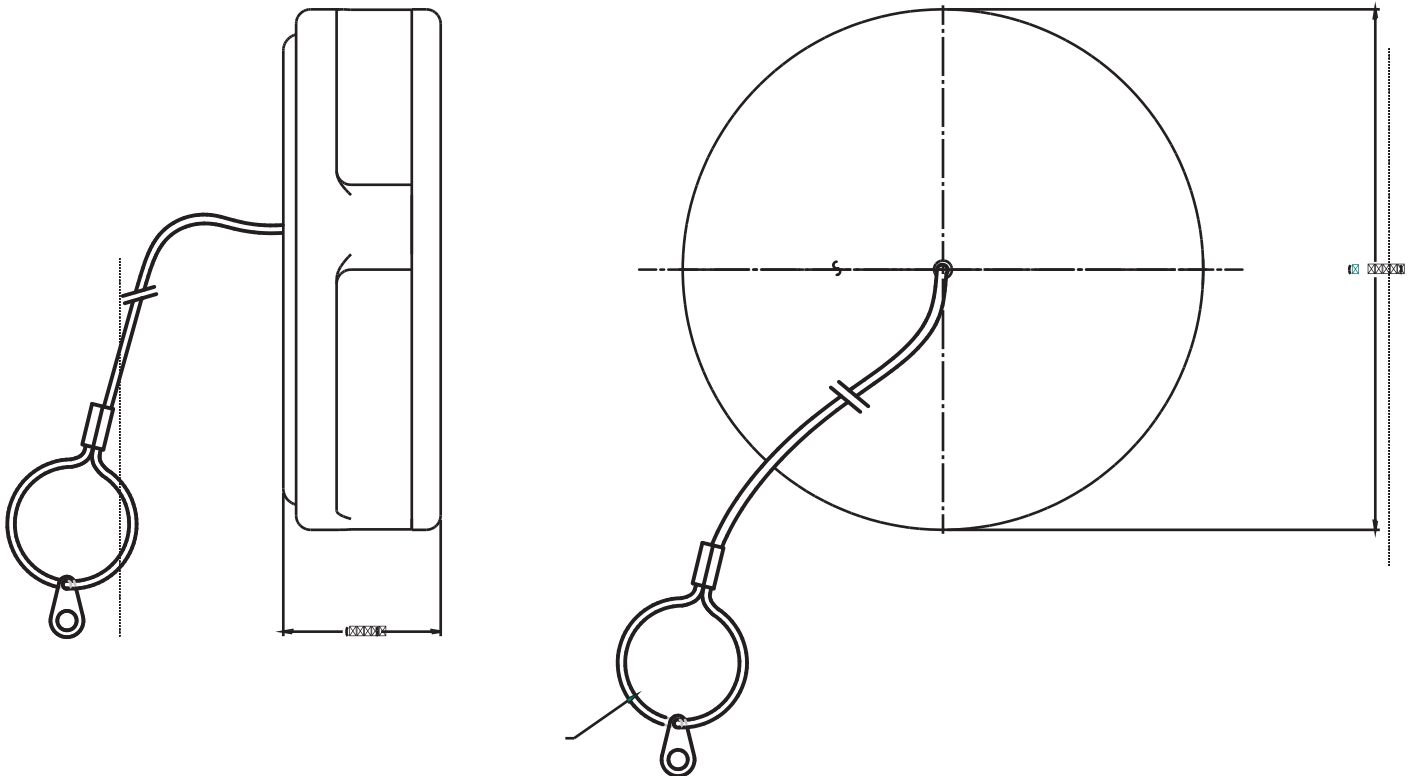
**PISTOLA WIGGINS ALTO FLUJO DE 300GPM,
CORTE AUTOMÁTICO,
SISTEMA NO PRESURIZADO.**





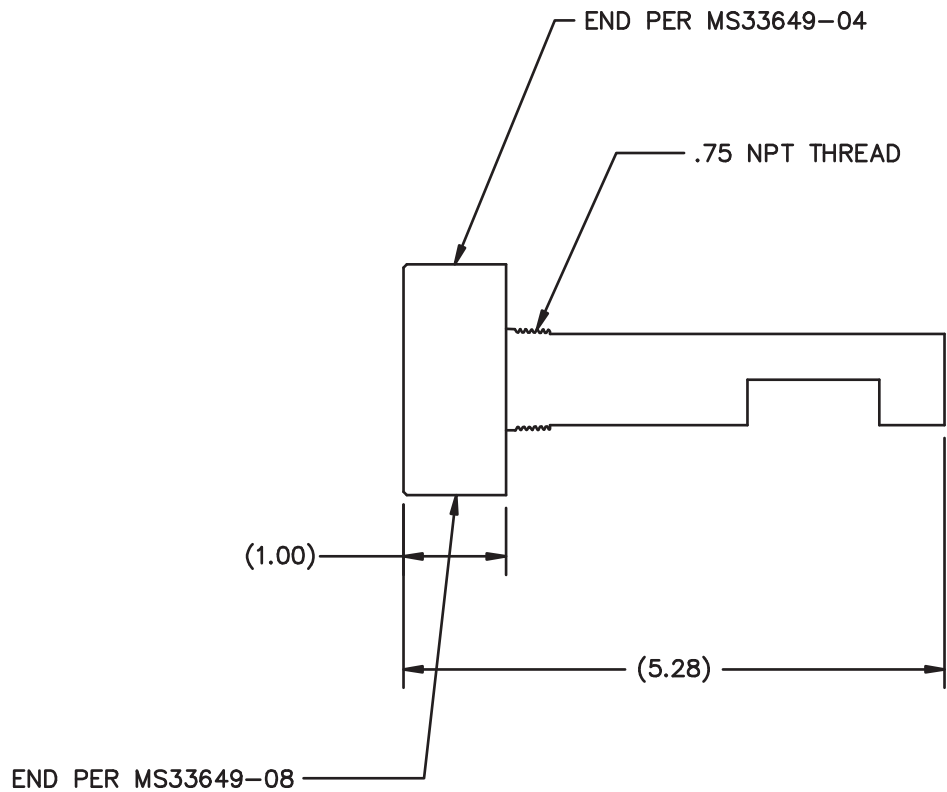
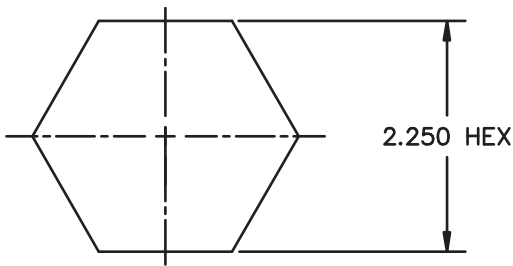
**ADAPTADOR MANGUERA/PISTOLA VR300,
USO OBLIGATORIO.**





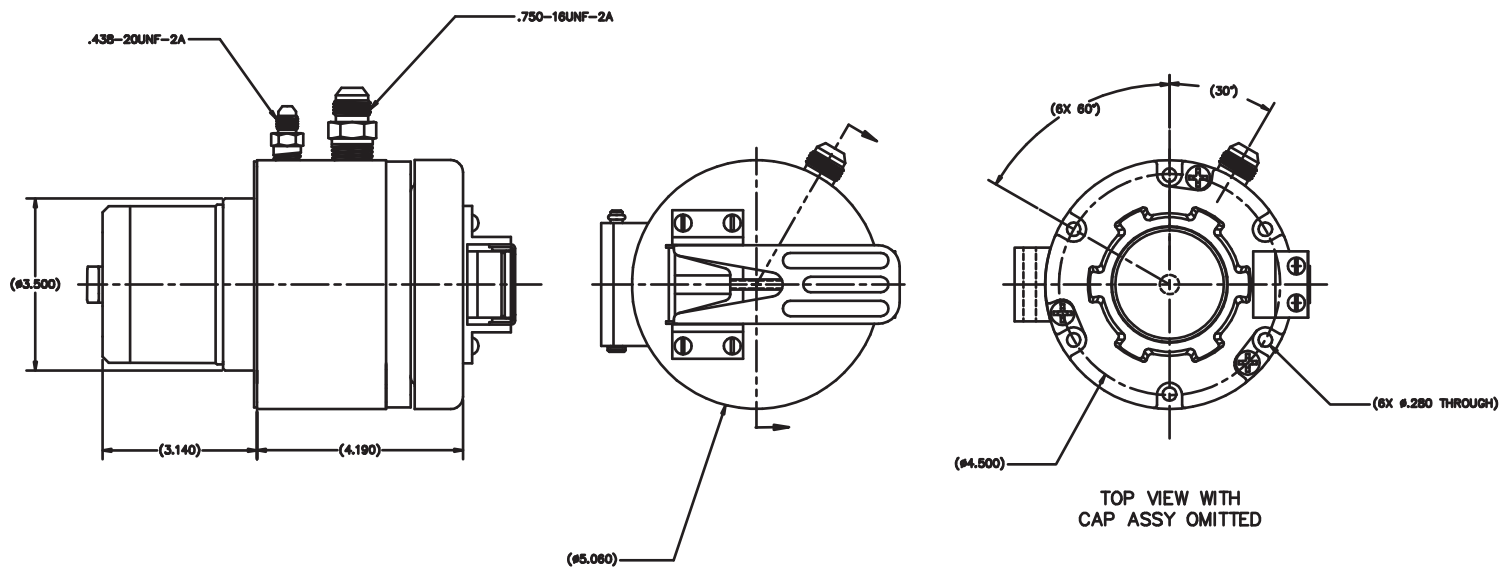
**TAPA PROTECTORA RECEPTOR VR316/VR325
SISTEMA NO PRESURIZADO VR300.**





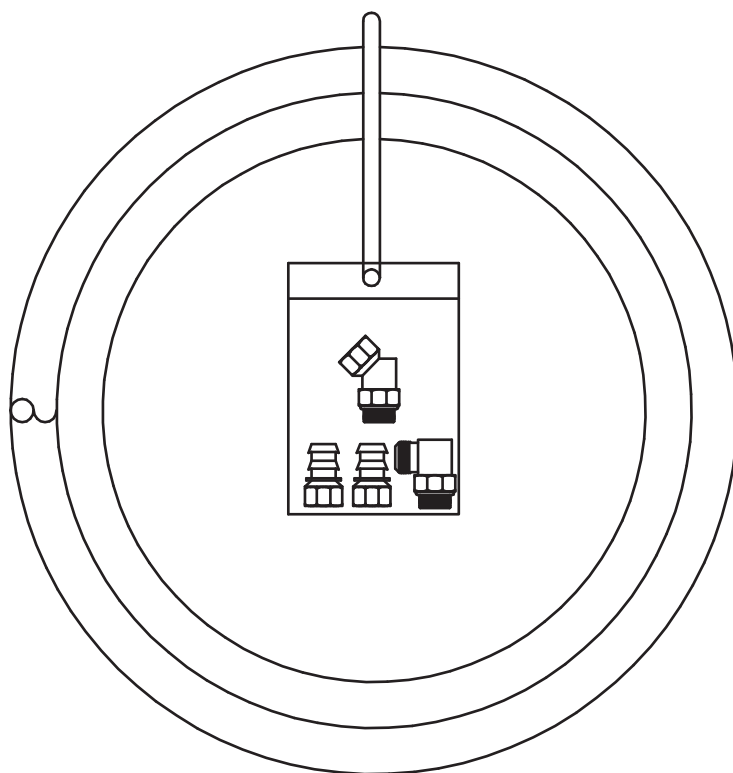
**SENSOR SISTEMA VR300
APLICACIONES ESPECIALES.**





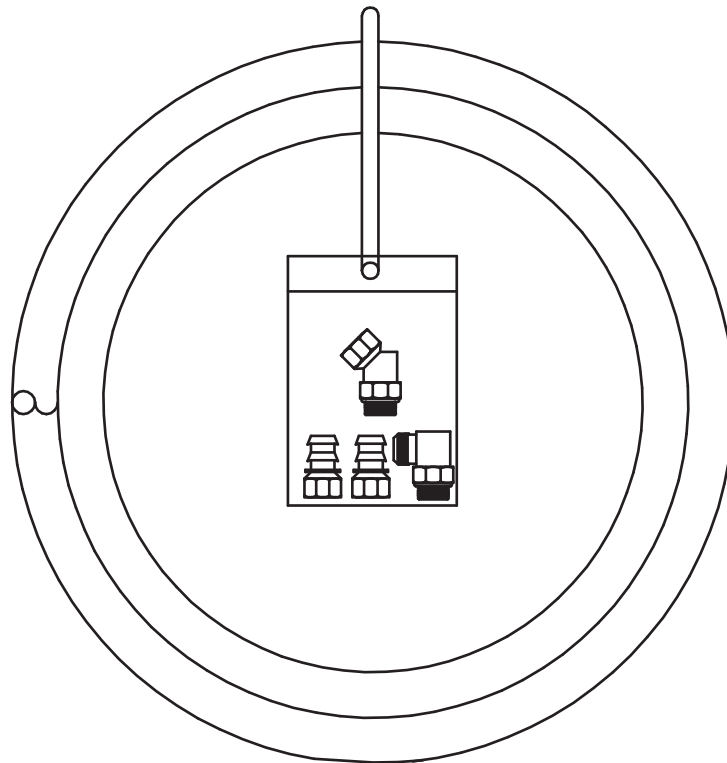
**RECEPTOR WIGGINS SISTEMA NO PRESURIZADO
300 GPM MONTAJE DIRECTO (CAT).**





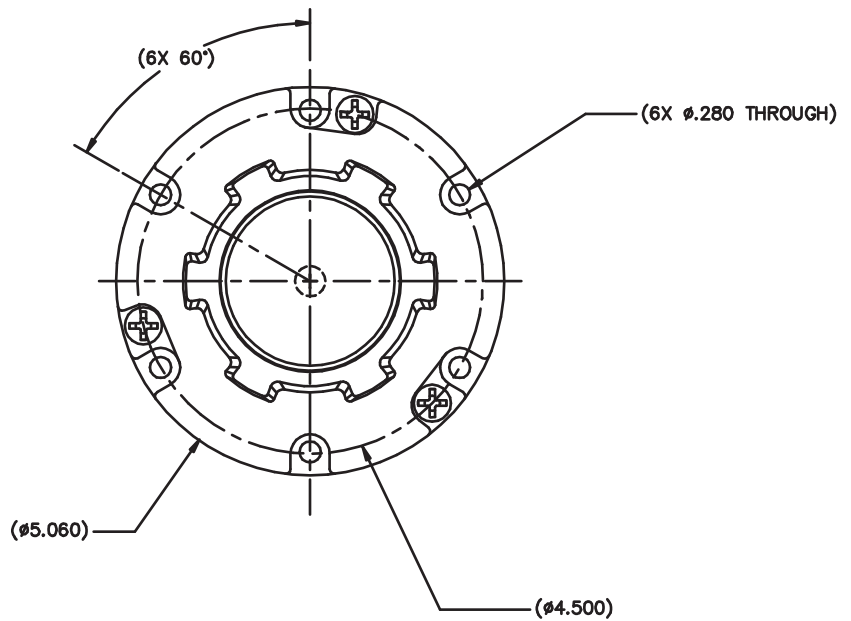
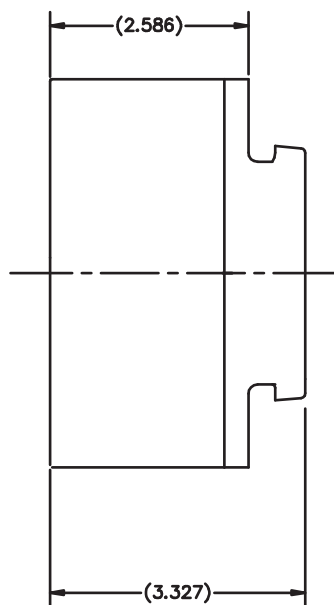
**KIT DE MANGUERA Y FITTINGS
PRIMARIO CONECCION PICK-UP SENSOR/CORTE AUTOMATICO,
SISTEMA VR300.**





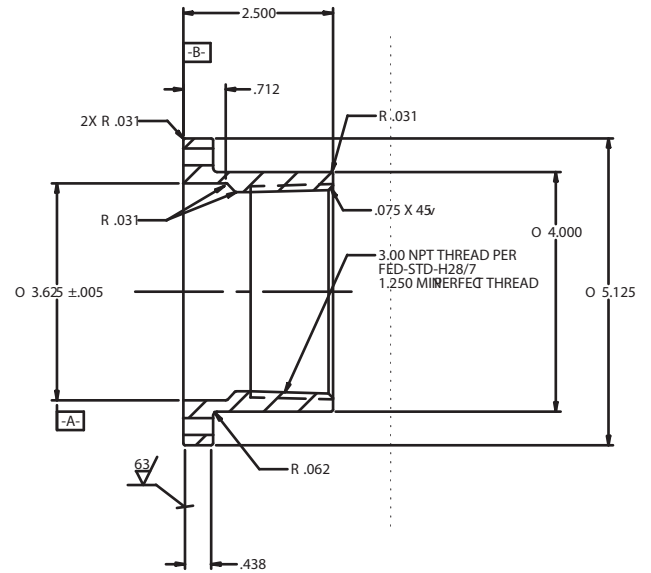
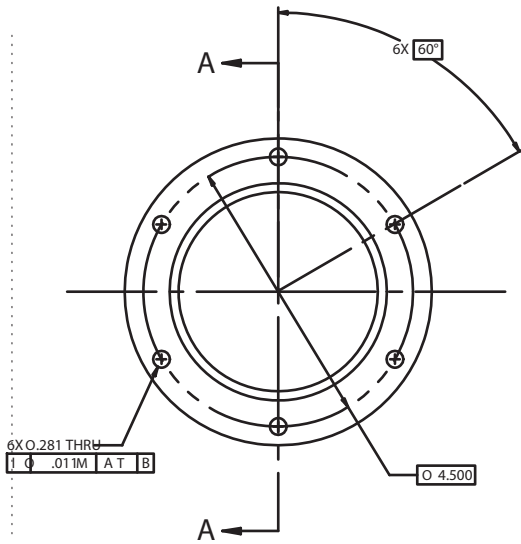
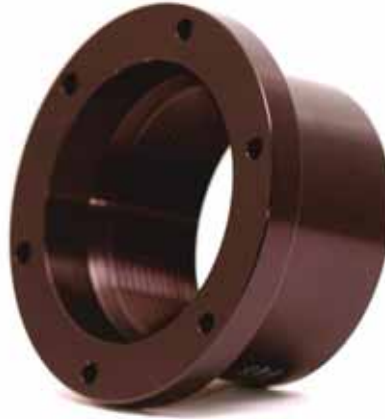
**KIT DE MANGUERA Y FITTING SECUNDARIO CONECCION
RETURN SENSOR/CORTE AUTOMATICO,
SISTEMA VR300.**





**RECEPTOR WIGGINS SISTEMA REMOTO
VR300 CON TAPA (KOMATSU).**

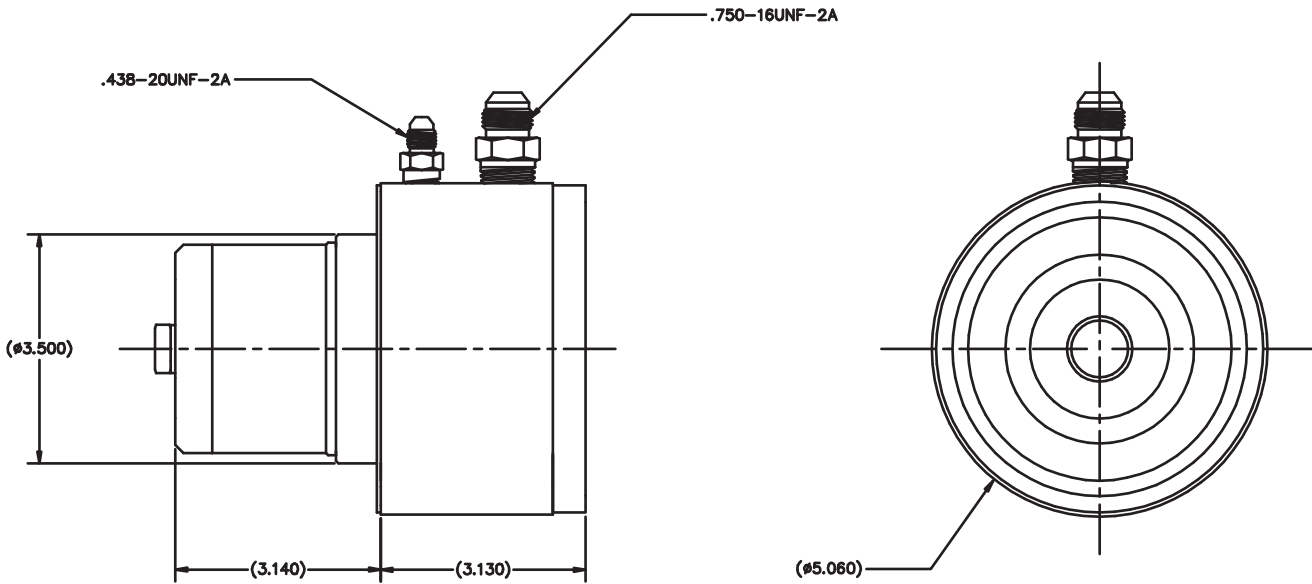




SECTION A-A

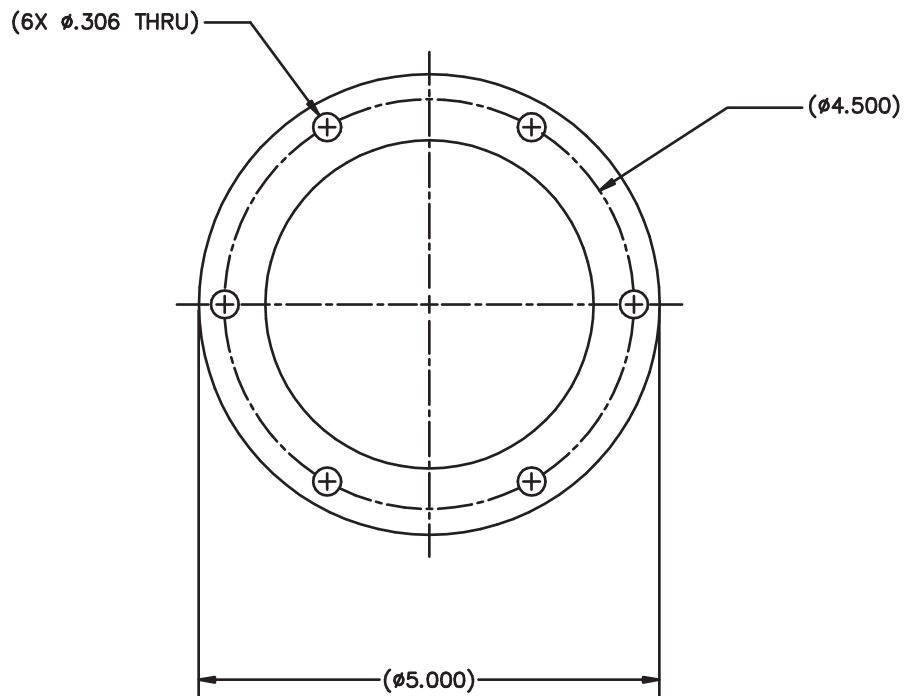
**ADAPTADOR PARA VR316
RECEPTOR (OPCIONAL).**





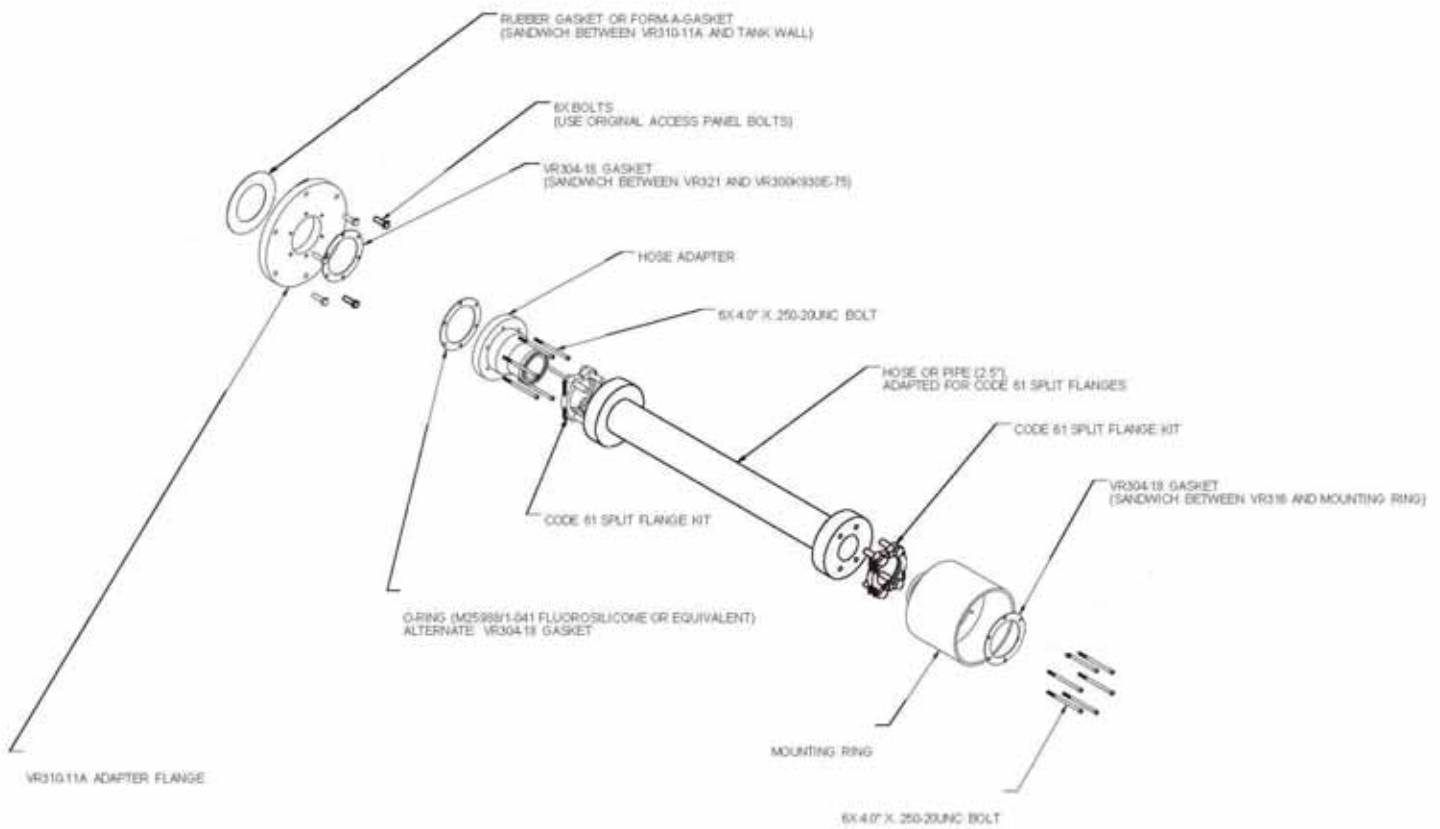
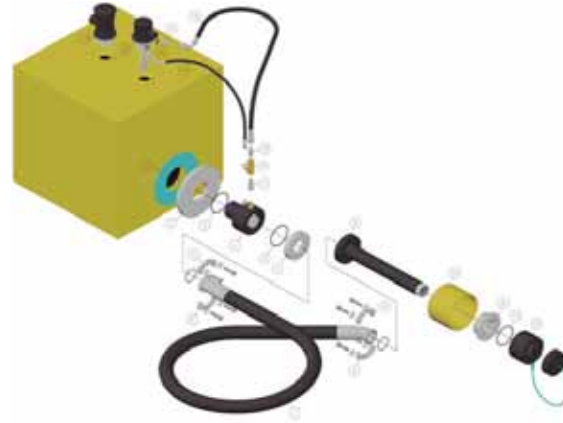
**VALVULA DE CORTE SISTEMA VR300
REMOTO PARA USO CON RECEPTOR VR316 (KOMATSU).**





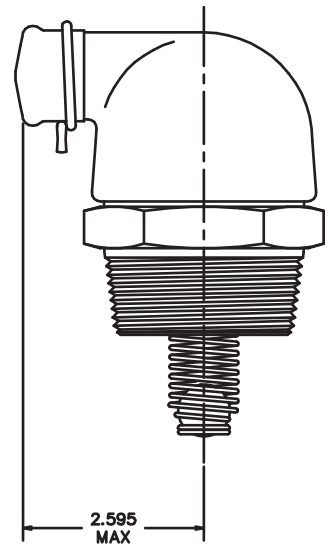
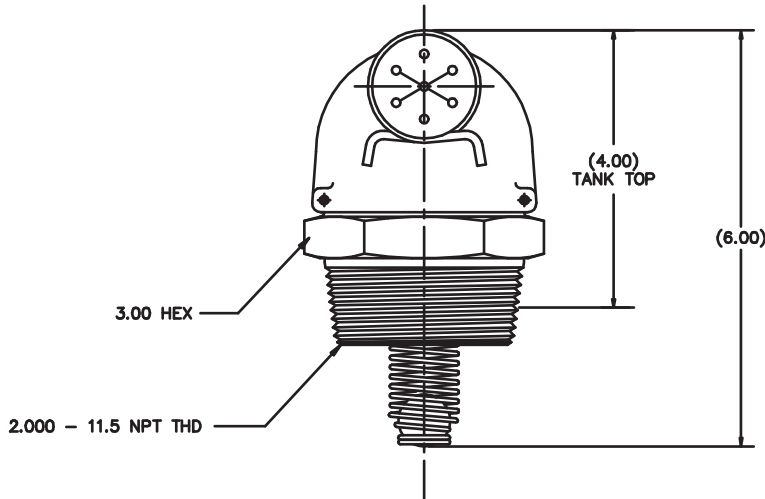
**EMPAQUETADURA PARA MONTAJE
VALVULAS VR325/VR316/VR321.**





**KIT PARA INSTALACION SISTEMA REMOTO
VR300 (NO INCLUYE SENSOR)
JVXFL/VR316/VR321/VR308-1/VR308-2/VR304-18).**



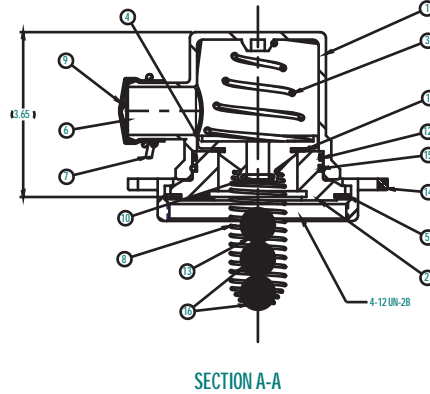
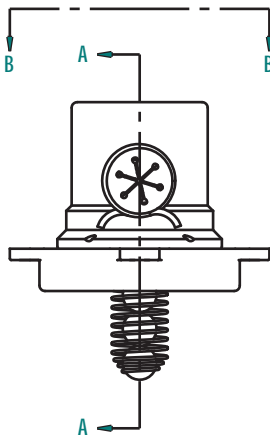


**VENTEO DE ESTANQUE WIGGINS
SISTEMA NO PRESURIZADO 300 GPM.**

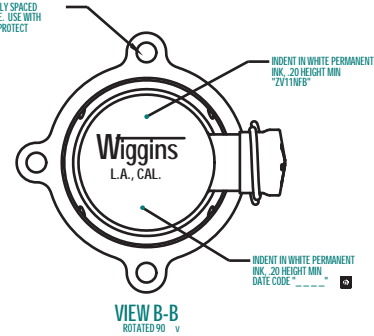




CHK	BY	RELEASE	REV	DESCRIPTION	DATE	APPROVED
TR	JC	205-0208	0	1) REDESIGNED AND REDRAWN 2) REVISED AND RENUMBERED NOTES AND LIST OF MATERIALS	04-07-28	FC
TT	JMS	0186	C	1) FIND NO 6 WAS ZV13-27 2) FIND NO 7 WAS ZV13-48 3) FIND NO 9 WAS ZV13-80 4) ADDED FIND NO 16	05-08-04	FC



4X 0.375 HOLES EQUALLY SPACED ON 0.4875 BOLT CIRCLE. USE WITH CHAIN AND PADLOCK TO PROTECT AGAINST VANDALISM.

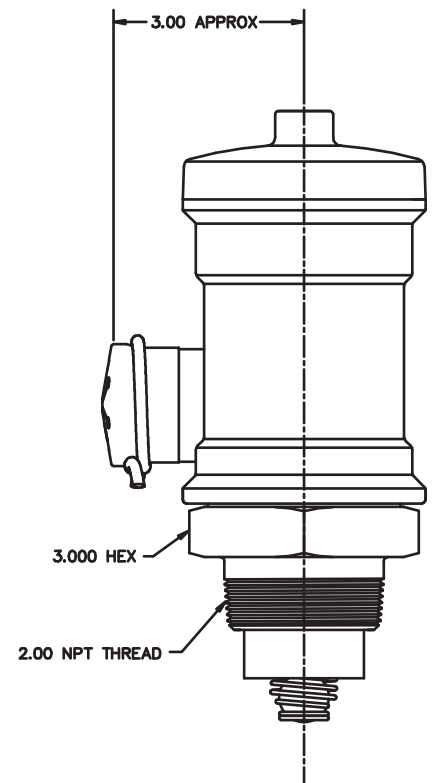
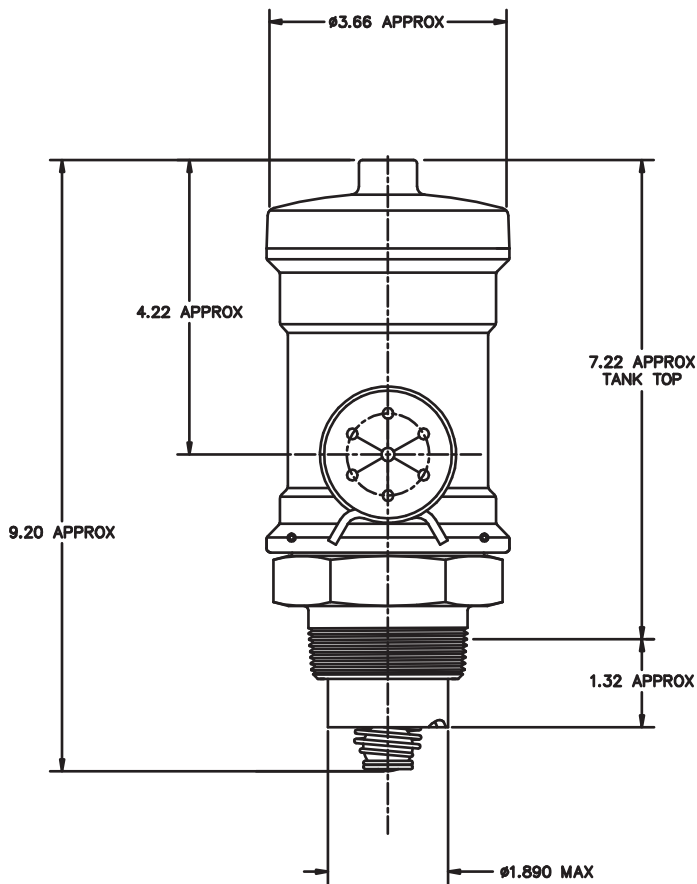


FIND NO.	QTY.	UNIT	PART OR IDENTIFIER	DESCRIPTION	MATERIAL	FINISH	FINISH SPEC.
16	2		HW17-23	HOLLOW BALL BRD. STAINLESS	POLYPROPYLENE	COML	
15	2		HW18-22	ROLL PIN	CRCS	COML	
14	1		ZV6-19	LOCKING RING	856-16 AL ALY	COML	
13	1		HW17-22	SOLID BALL	CELCON	COML	
12	1		MS28775-147	O-RING	BUNA N	AMS-P-83461	
11	1		ZV10-31	SEAL	BUNA N	STM D2000	
10	1		M25988/3-112	O-RING	FLUOROSILICONE	AMS-R-25988	
9	1		ZV10-80	COVER	NYLON	COML	
8	1		ZV3-76	BALL CAGE	302 CRCS	COML	ZINC PLATE
7	1		ZV10-48	CLAMP	STEEL	COML	ZINC PLATE
6	1		ZV10-27	SCREEN	BONAS	COML	
5	1		ZV6-12A	BODY SEAL	NYLON	COML	
4	1		JPT25-13	STEM	PC/PBT ALLOY	VENO 5730-BLACK	
3	1		ZV6-11	SPRING VALVE	17-7PH CRCS	AMS 5678	PASSNATE
2	1		ZV11-15	END	2024-14 AL ALY	COML	ANODIZE CLR
1	1		ZV6-1P	BODY	PC/PBT ALLOY	VENO 5730-BLACK	

4 ALTERNATE MATERIAL: 2024-1351 AL ALY
 5 DATE CODE COMPRISED OF MONTH/YEAR: EXAMPLE JULY 2004: "7/04"
 6 FOR REPAIR PARTS KIT SEE DRAWING K30310
 4 ASSEMBLE, INSPECT, TEST, AND PACKAGE PER THE REQUIREMENTS OF ADEL WIGGINS ITP-218, LATEST REV
 3 RELIEF PRESSURE: 10.5 PSIG - 11.25 PSIG
 2 OPERATING TEMPERATURE RANGE: -30°F TO +220°F
 1 FOR DESIGN RATING PURPOSES ONLY: OPERATING PRESSURE: 60 PSIG

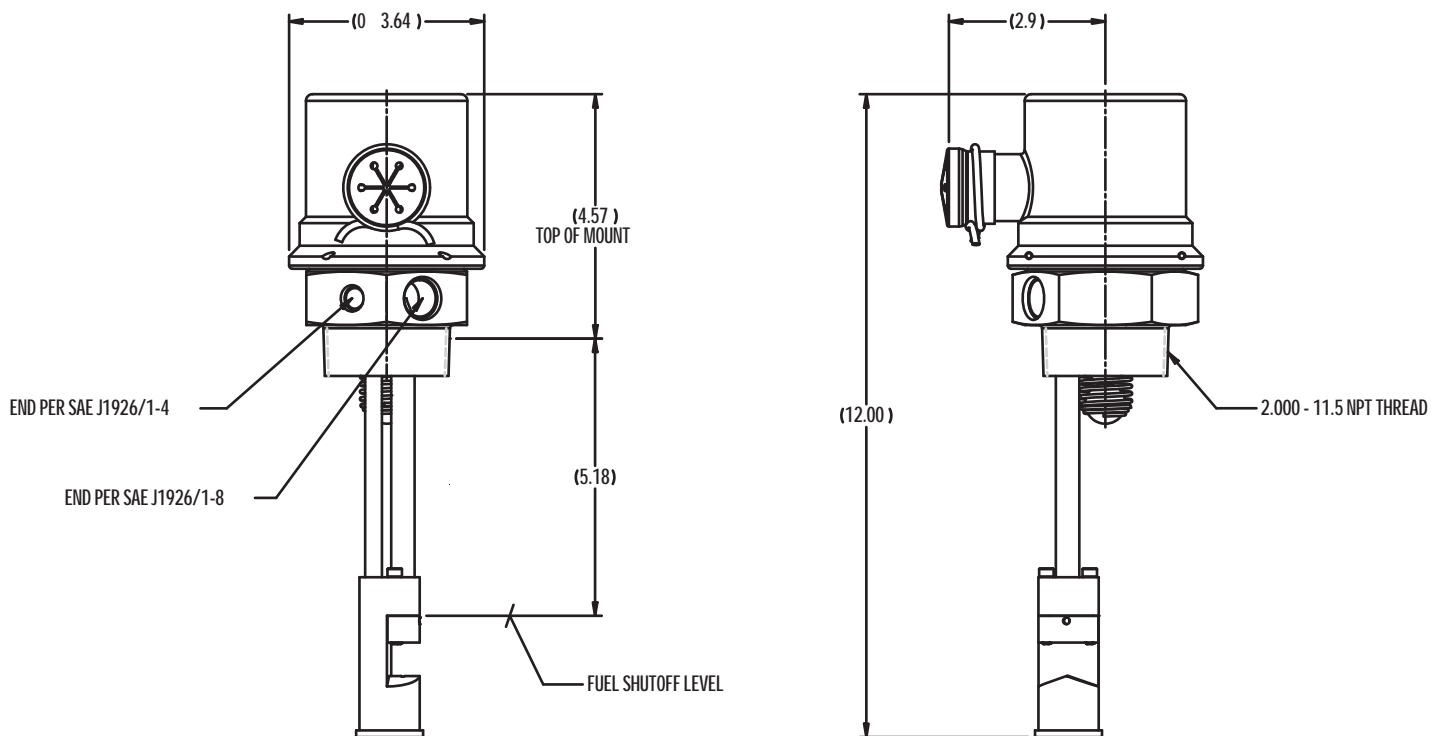
VENTEO DE ESTANQUE WIGGINS SISTEMA NO PRESURIZADO 300GPM APLICACIONES ESPECIALES.





**VENTEO DE ESTANQUE WIGGINS SISTEMA NO PRESURIZADO
300GPM APLICACIONES ESPECIALES.**

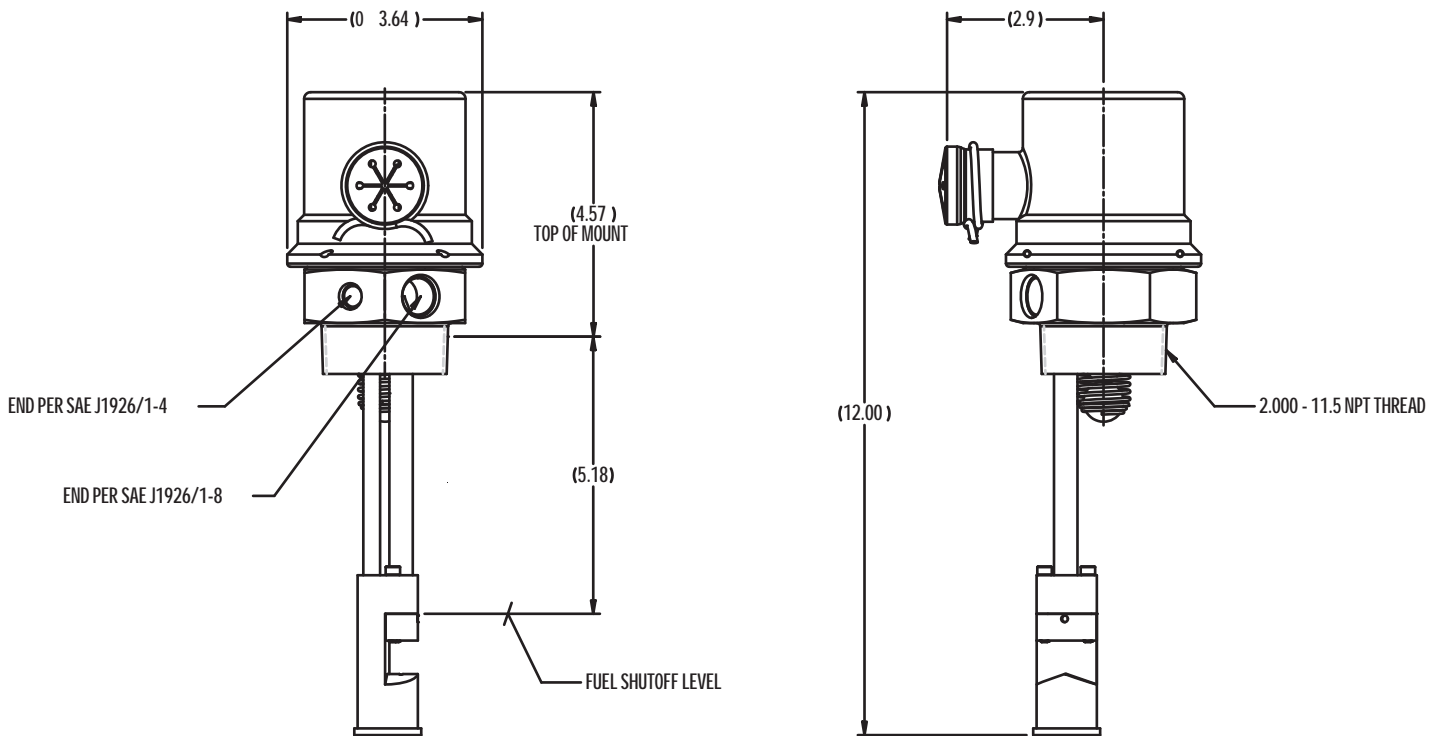




WIGGINS PART NUMBER JVXL
ENVELOPE DRAWING

VENTEO CON JET SENSOR CON FILTRO INCORPORADO USO STANDARD EN SISTEMA VR300 NO PRESURIZADO.

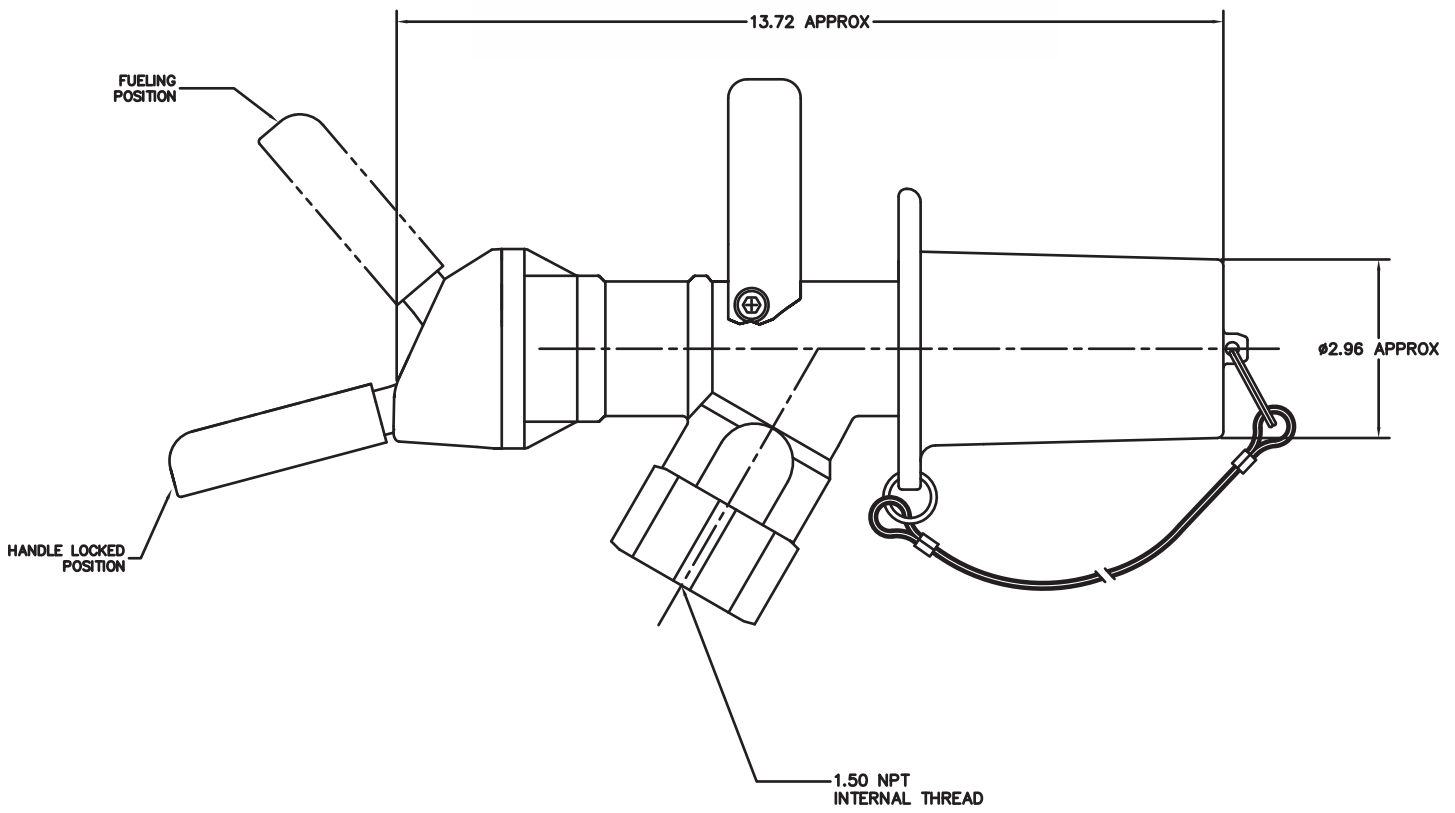




WIGGINS PART NUMBER JVXL
ENVELOPE DRAWING

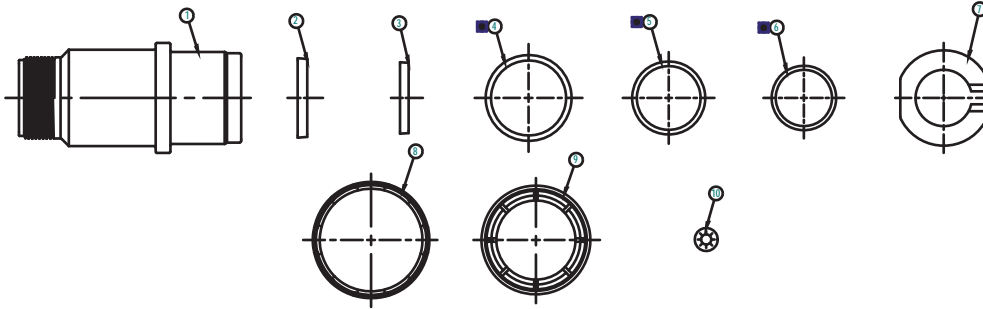
**VENTEO CON JET SENSOR SIN FILTRO
EN SISTEMA VR300 NO PRESURIZADO.**





**PISTOLA ALTO FLUJO WIGGINS
150GPM CORTE AUTOMATICO.**





REV. NO.	DATE	RELEASED BY	REVISIONS	DATE	APPROVED
01	05-01-61		REPLACES BEV MC WITH CHANGES AND REKAWN IN SOLID EDGE.	06-06-27	TC
			1) ADDED NOTES 3 AND 3		
			2) CREATED PARTS LIST		
			3) ADDED BALLBOONS TO ALL PARTS AND		

MANDATORY REPLACEMENT



CONDITIONAL REPLACEMENT



REPLACE WHENEVER R9038 (ADAPTER) IS UNSCREWED

QTY	PART NO.	DESCRIPTION	UNIT	REVISION	DATE	APPROVED
14	M25988/1-924	O-RING				
13	R9041	BORE LINER				
12	R9085	SLEEVE SUBASSY				
11	R9026	TUBE				
10	HW16-04	PUSH NUT				
9	R9021	ELASTODOG				
8	R9019	ELASTODOG RETAINER				
7	R9011	SPRING RETAINER				
6	M25988/1-130	O-RING				
5	M25988/1-132	O-RING				
4	R9046	O-RING				
3	R9014	PISTON SEAL				
2	CCN101-31B	WIPER SEAL				
1	R9048	HOUSING BODY				

- 3. INCLUDE A COPY OF ENGINEERING DRAWING IN THE PACKAGE WHEN SHIPPED AS A KIT
- INDIVIDUAL PART IDENTIFICATION REQUIRED FOR FUND NO. 4, 5, 6 AND 14 ONLY WHEN PARTS ARE TO BE PACKAGED AND SHIPPED AS A KIT
- 1. TO BE USED IN CONJUNCTION WITH WPS-107 LATEST REVISION

NOTES: UNLESS OTHERWISE SPECIFIED

THIS DRAWING IS PROTECTED UNDER COPYRIGHT LAW AND IS THE PROPERTY OF ADEL WIGGINS GROUP. TRANSMISSION OF THIS DRAWING TO ANY OTHER PARTY WITHOUT THE WRITTEN CONSENT OF ADEL WIGGINS GROUP IS STRICTLY PROHIBITED. ANY UNAUTHORIZED REPRODUCTION OR SALE OF EQUIPMENT OUTSIDE OF ADEL WIGGINS GROUP, TRANSMISSION, OR RELEASED WITHOUT THE WRITTEN CONSENT OF ADEL WIGGINS GROUP, TRANSMISSION, INC.

REV. NO.	DATE	RELEASED BY	REVISIONS	DATE	APPROVED
01	05-01-61		REPLACES BEV MC WITH CHANGES AND REKAWN IN SOLID EDGE.	06-06-27	TC
			1) ADDED NOTES 3 AND 3		
			2) CREATED PARTS LIST		
			3) ADDED BALLBOONS TO ALL PARTS AND		

THIS DRAWING IS PROTECTED UNDER COPYRIGHT LAW AND IS THE PROPERTY OF ADEL WIGGINS GROUP. TRANSMISSION OF THIS DRAWING TO ANY OTHER PARTY WITHOUT THE WRITTEN CONSENT OF ADEL WIGGINS GROUP IS STRICTLY PROHIBITED. ANY UNAUTHORIZED REPRODUCTION OR SALE OF EQUIPMENT OUTSIDE OF ADEL WIGGINS GROUP, TRANSMISSION, OR RELEASED WITHOUT THE WRITTEN CONSENT OF ADEL WIGGINS GROUP, TRANSMISSION, INC.

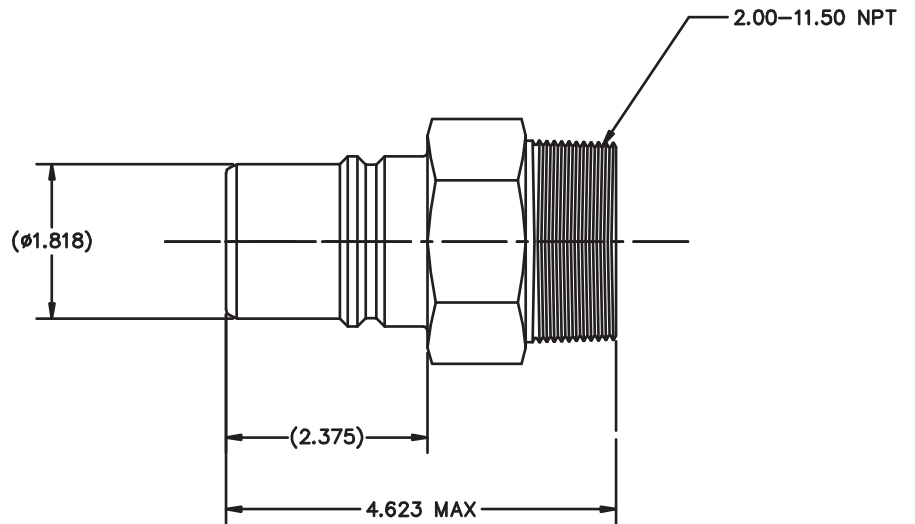
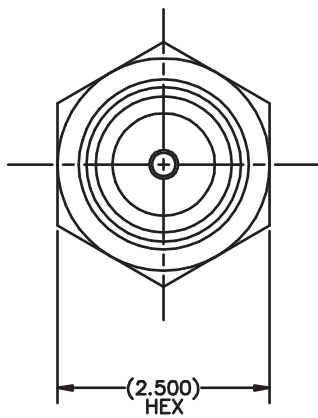
ADEL WIGGINS GROUP
 100 ANGLE, CA 94022

ZZ9A1 REBUILD KIT

F. CHING
 79326
ZZ9A1-K

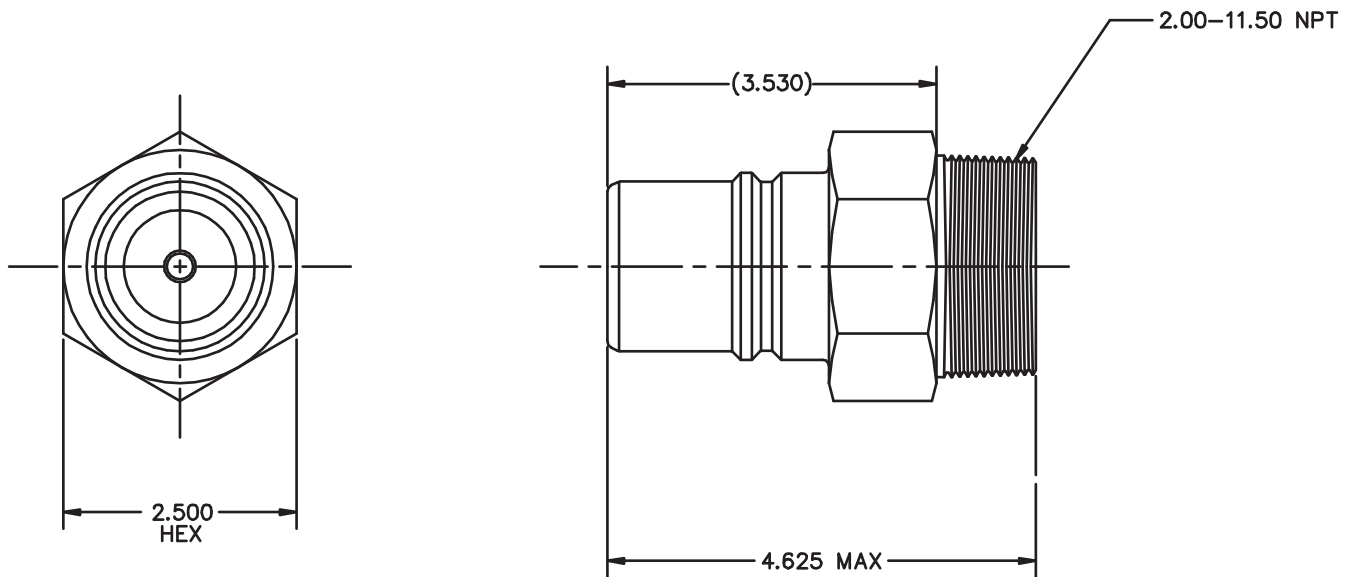
KIT DE REPARACION PARA PISTOLA ZZ9A1.





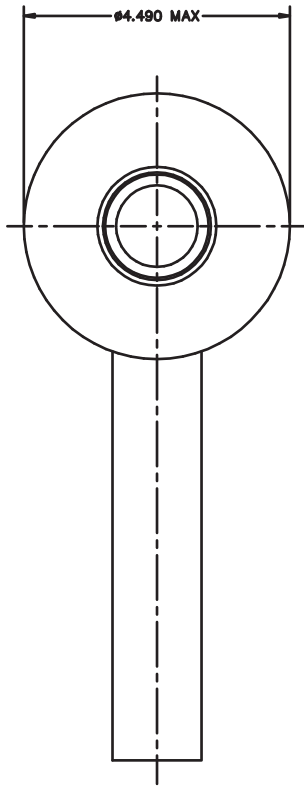
**RECEPTOR WIGGINS 150GPM,
SISTEMA PRESURIZADO ESTANDAR.**



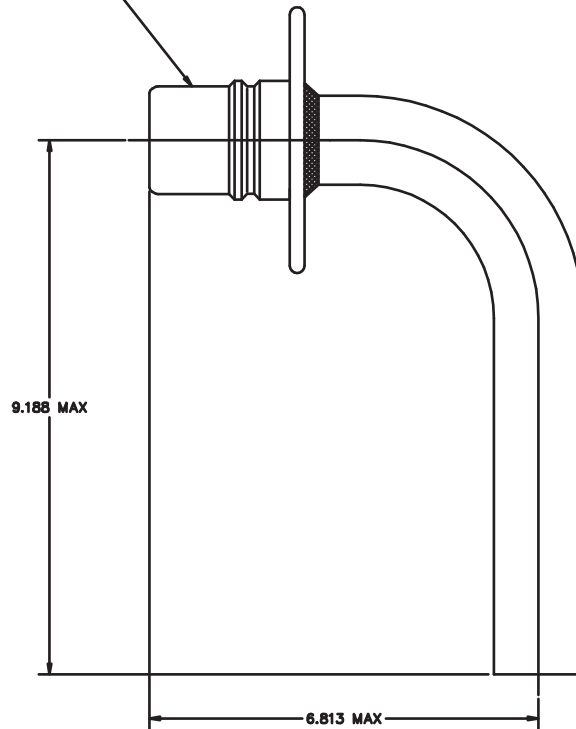


**RECEPTOR WIGGINS 150GPM,
SISTEMA PRESURIZADO OPCIONAL.**



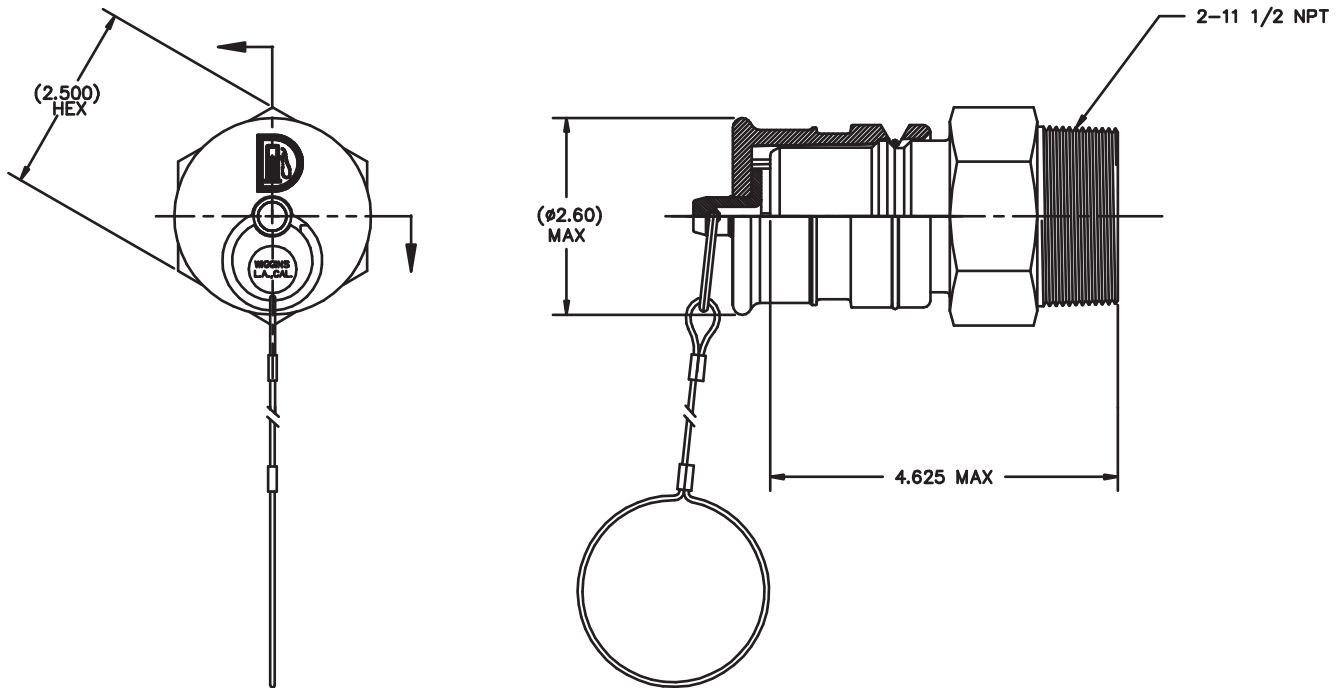


CONNECTS TO ZZ9A1
AND ZZF150 NOZZLES



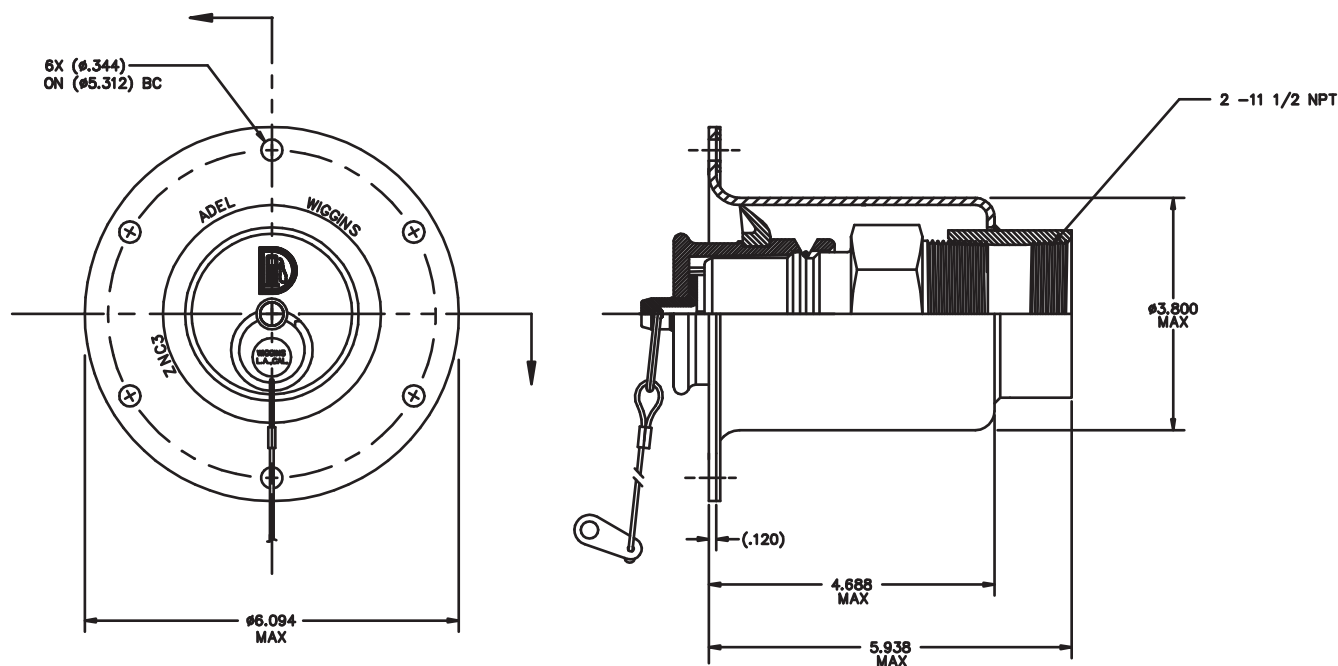
**ADAPTADOR PARA PISTOLA ZZ9A1
PARA USOS SIN RECEPTOR Y TRASVASIJE
CONVENCIONAL SIN RECEPTOR.**





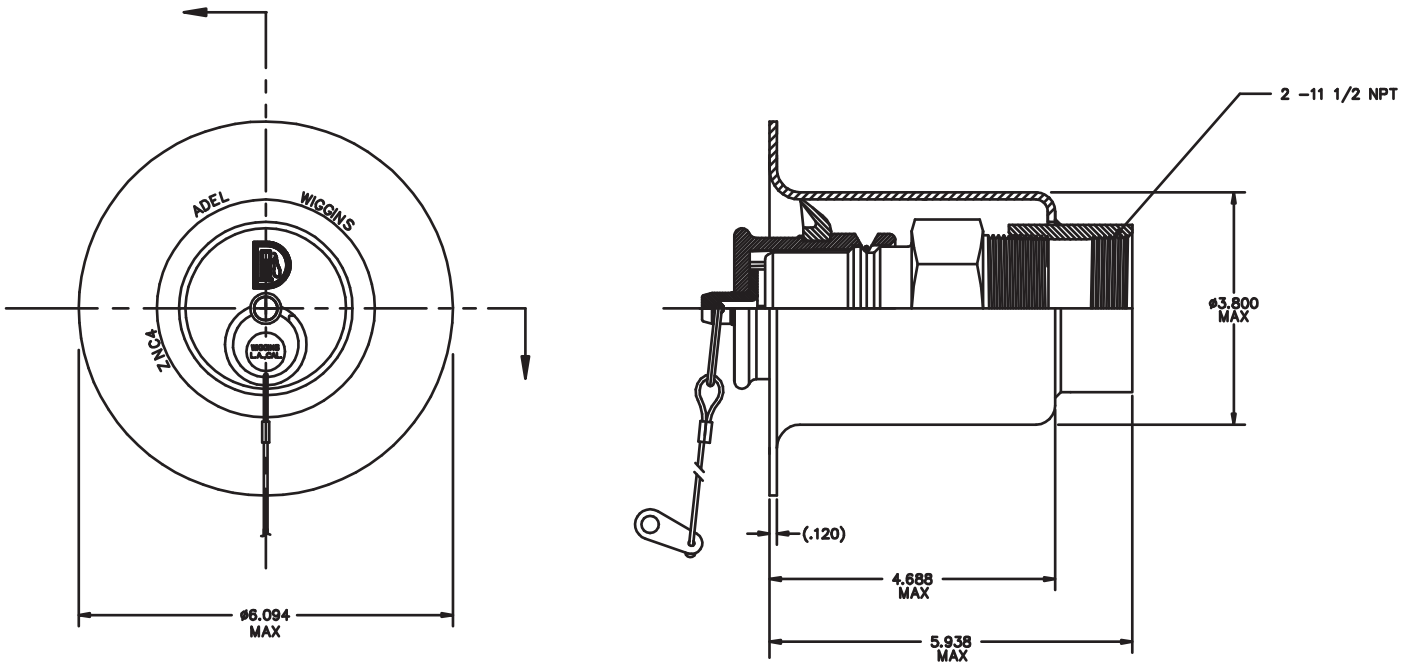
**RECEPTOR WIGGINS 150GPM,
SISTEMA PRESURIZADO ESTANDAR CON TAPA.**





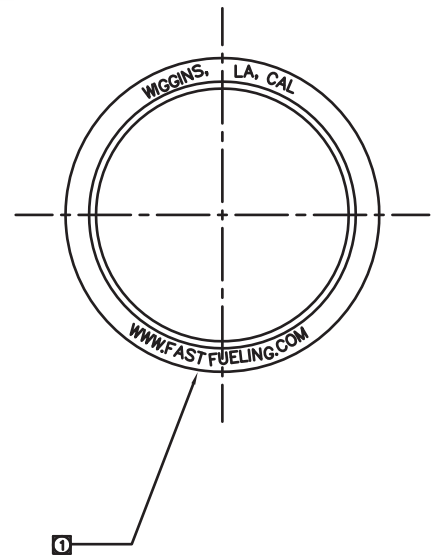
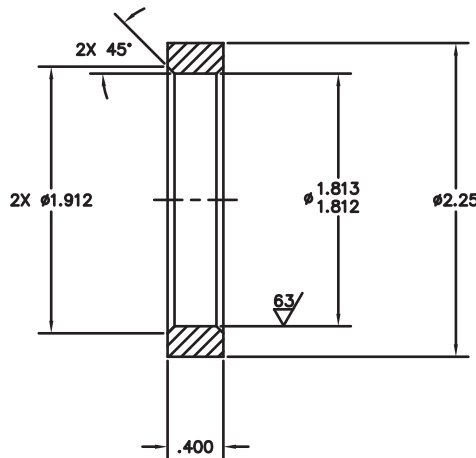
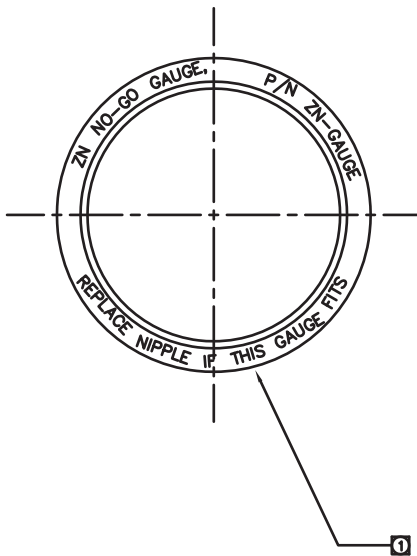
RECEPTOR SISTEMA PRESURIZADO WIGGINS CON CAMPANA PROTECTORA, EMPAQUETADURA Y TAPA SISTEMA 150GPM (APERNAO).





**RECEPTOR SISTEMA PRESURIZADO
WIGGINS CON CAMPANA PROTECTORA
Y TAPA SISTEMA 150GPM STANDARD.**



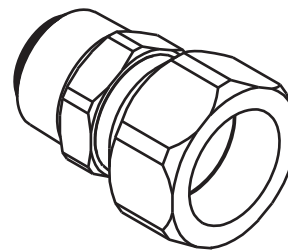
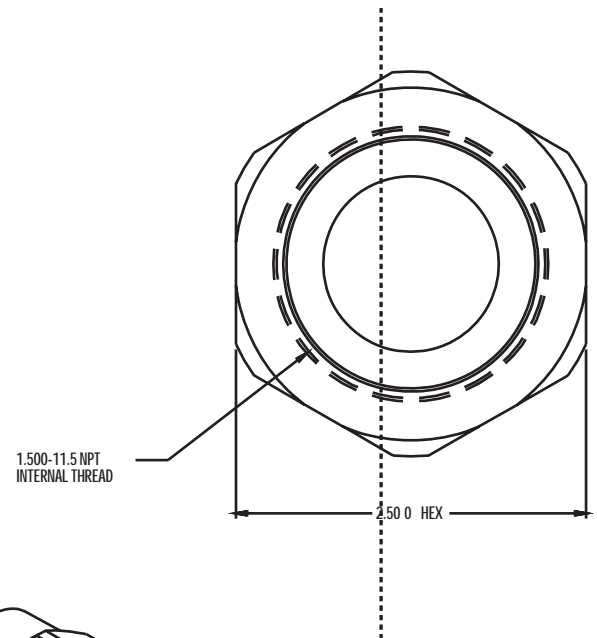
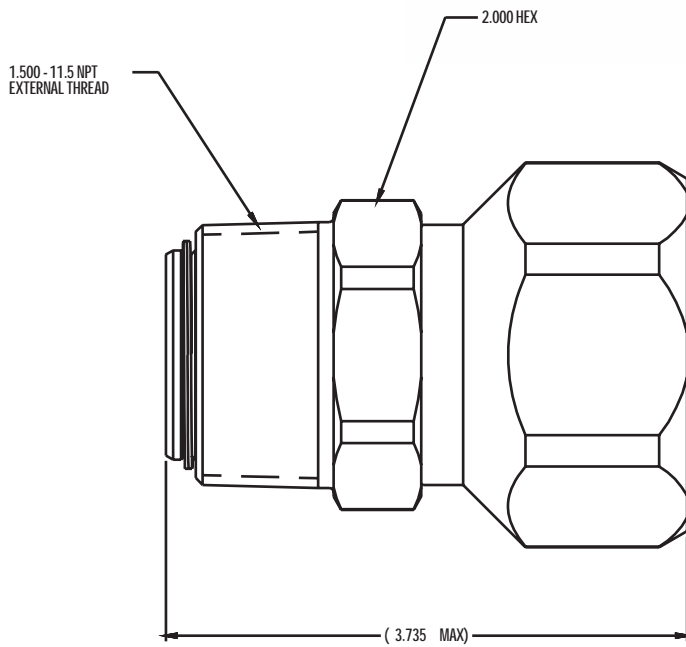


1 IDENT WITH BLACK PERMANENT INK OR LASER ENGRAVE AS SHOWN (PER ADEL WIGGINS WSIP-2)

NOTES: UNLESS OTHERWISE SPECIFIED

ANILLO MEDICION, RECEPTOR ZN2A/ZNC2A/ZNC3L/ZNC4L.

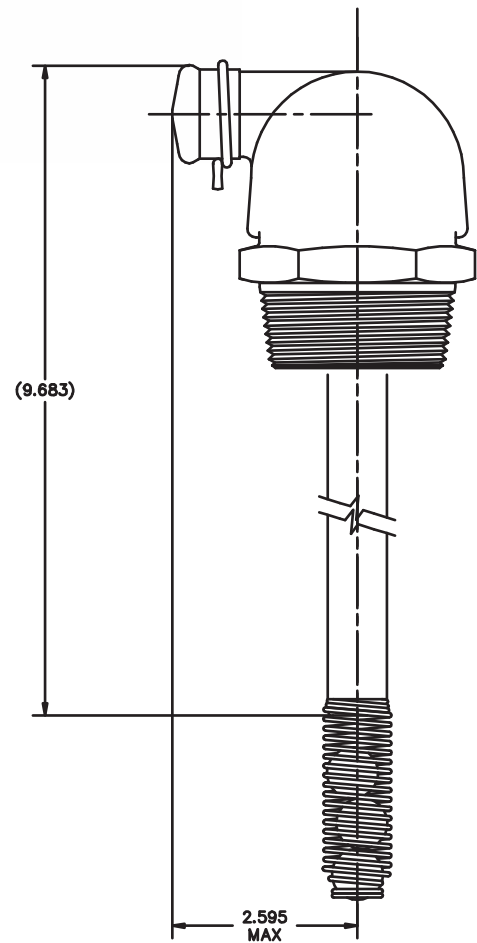
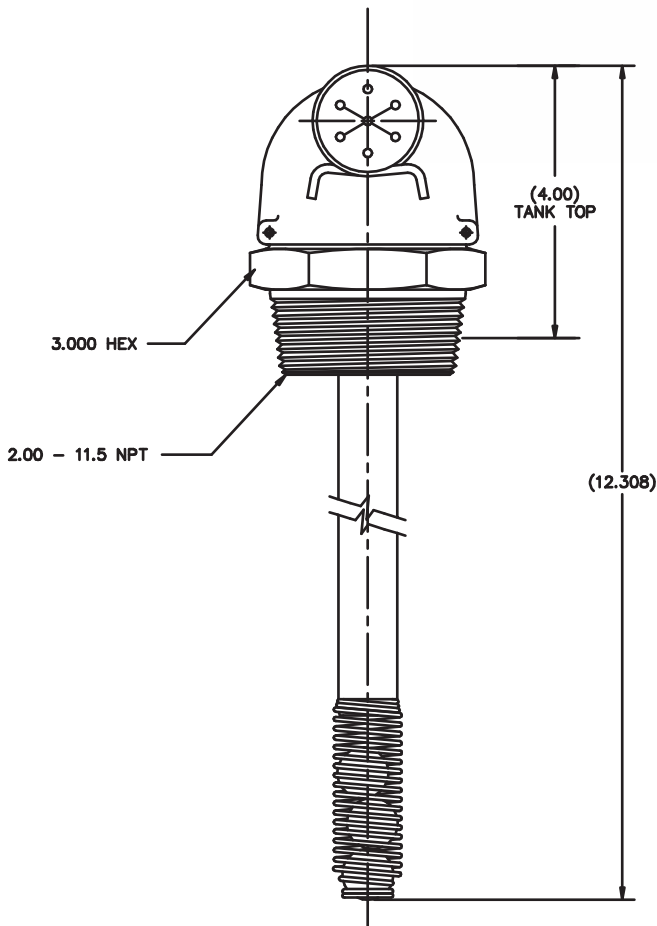




REFERENCE ONLY

**UNION GIRATORIA WIGGINS
MANGUERA/PISTOLA 1 1/2 PULGADA.**



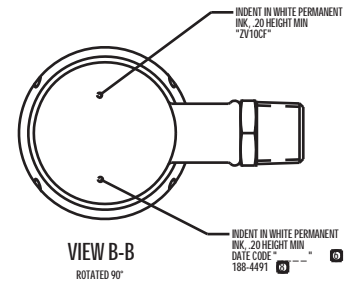
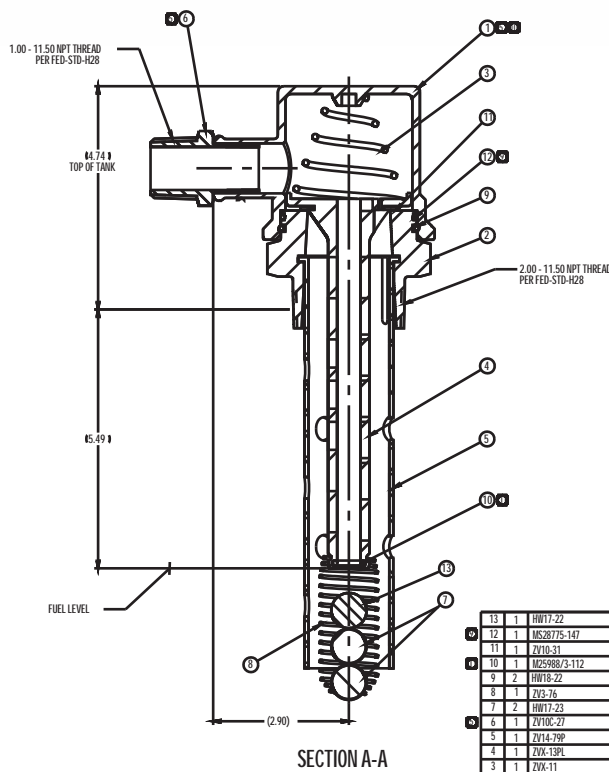
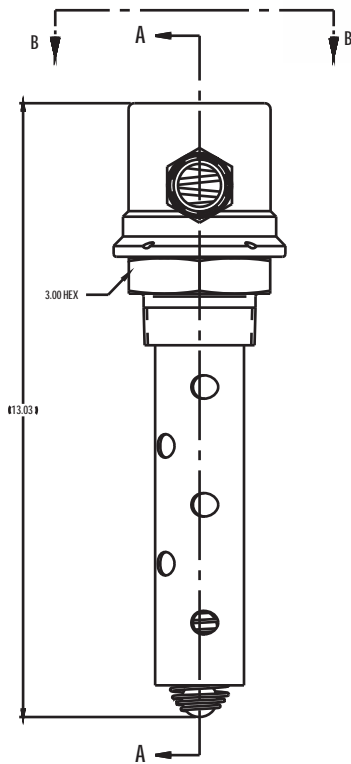


**VENTEO DE ESTANQUE WIGGINS SISTEMA
PRESURIZADO 150GPM USO STANDARD.**





REV	CHK BY	RELEASE	REV	DESCRIPTION	DATE	APPROVED
11	HT	05-0110	E	REPLACES REV D WITH CHANGES: 1) NOTE 8, ADDED "PER WSP-2, CLASS 12 OR CLASS 22, LATEST REV" 2) REMOVED "WIGGINS, LA, CAL" LOGO FROM VIEW B-B 3) ADDED NOTES 9 TO 11	2006/07/14	FC



- 1) APPLY POLYKOTE 3452 TO FIND NO 10 BEFORE ASSEMBLY
- 2) HAND ROTATE FREELY AFTER ASSEMBLY
- 3) APPLY PETROLATUM TO FIND NO 12 BEFORE ASSEMBLY
- 4) FOR CATERPILLAR ORDER, ADD CATERPILLAR P/N PER WSP-2, CLASS 12 OR CLASS 22, LATEST REV
- 5) FOR DESIGN RATING PURPOSES: OPERATING PRESSURE: 30 PSIG
- 6) DATE CODE COMPRISED OF MONTH/YEAR: EXAMPLE JULY 2004: "7/04"
- 7) APPLY SCOTCH WELD DP-190 GRAY ADHESIVE ALL AROUND END OF FIND NO 6, LEAVING NO GAPS FOR LEAK PATHS. ASSEMBLE FIND NO 6 ON TO FIND NO 1 UNTIL BOTTOMED OUT WHILE ROTATING. ROTATE FIND NO 6 360° TO ELIMINATE ANY LEAK PATHS REMOVE EXCESS ADHESIVE. ADHESIVE WORKLIFE AT 75°-90 MINUTES CURE FOR 2 HRS AT 150°F OR 72 HRS AT ROOM TEMPERATURE FOR REPAIR KIT SEE DWG K30310
- 8) CALCULATED RELIEF PRESSURE TO BE 10.2 PSIG MIN AND 12.9 PSIG MAX
- 9) OPERATING TEMPERATURE RANGE: -30°F TO +220°F
- 10) ASSEMBLE, INSPECT, TEST, AND PACKAGE PER ADEL WIGGINS SPEC ITP-218, LATEST REV

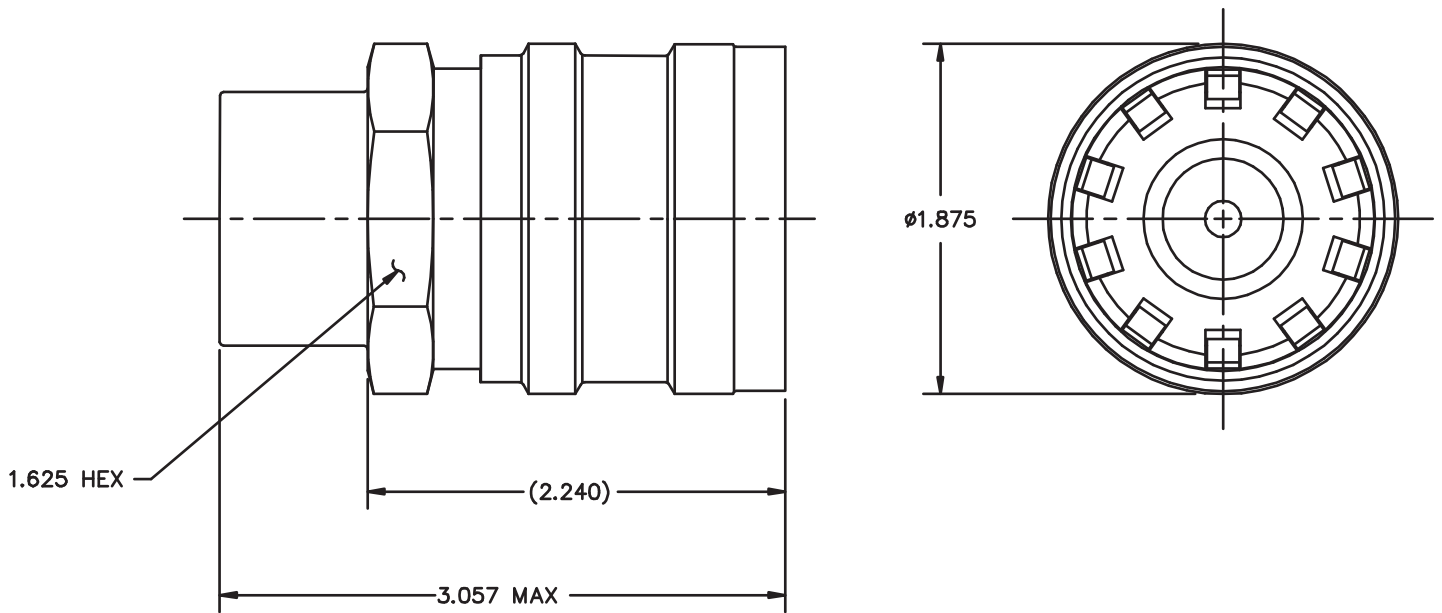
NOTES: UNLESS OTHERWISE SPECIFIED

ITEM NO	QTY	DESCRIPTION	MATERIAL	UNIT	FRSH	FRSH SPEC
13	1	HW17-22	SOLID BALL	DELTON	COML	
12	1	MS28775-147	O-RING	BRUNN	MS-P-83461	
11	1	ZV10-31	SEAL	BRUNN	ST1102500	
10	1	MS2980/3-112	O-RING	FLUOROSILICONE	AMS-R-25988	
9	2	HW18-22	ROLL PIN	CRS	COML	
8	1	ZV3-26	BALL CAGE	302 CRS	COML	
7	2	HW17-23	HOLLOW BALL GRID, SEAMLESS	POLYPROPYLENE	COML	
6	1	ZV10C-27	ADAPTER	AL ALY	COML	
5	1	ZV4-79P	SHIELD	PC/PBT ALLOY	VENT 5720-BLACK	
4	1	ZV4-13PL	STEM	PC/PBT ALLOY	VENT 5720-BLACK	
3	1	ZVX-11	SPRING VALVE	17-7PH CRS	AMS 5678	PASSIVATE COML
2	1	ZVX-15	END	AL ALY	COML	CHEM FILM COML
1	1	ZVX-1P	BODY	PC/PBT ALLOY	VENT 5720-BLACK	COML

REV	CHK BY	RELEASE	REV	DESCRIPTION	DATE	APPROVED
1	HT	05-0110	E	VENT ASSEMBLY	2006/07/14	FC

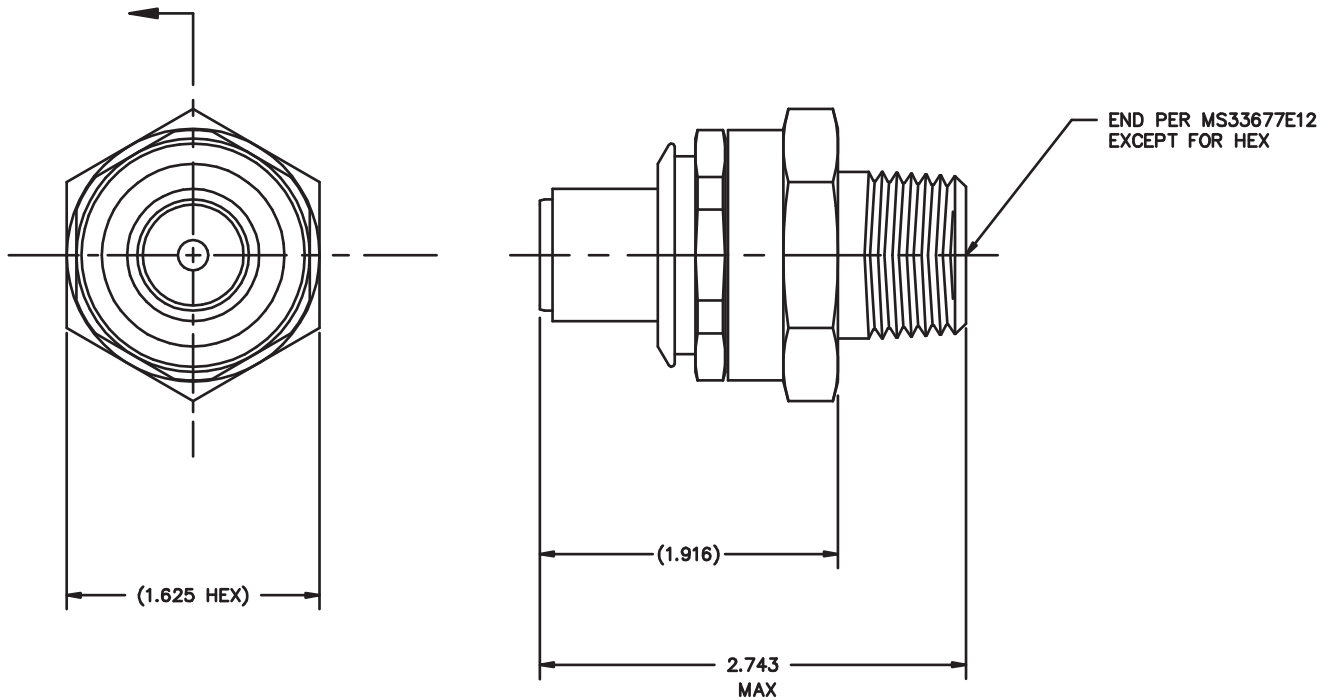
VENTEO DE ESTANQUE WIGGINS SISTEMA PRESURIZADO 150GPM.





**RECEPTOR FLUIDO
HIDRAULICO WIGGINS SIN TAPA.**



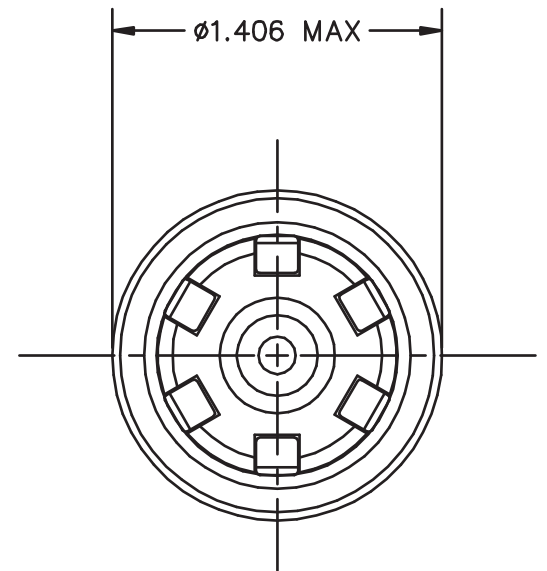
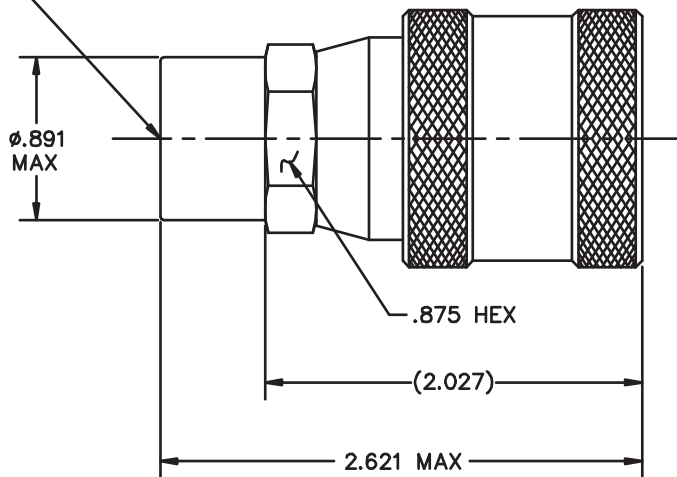


**RECEPTOR FLUIDO HIDRAULICO
WIGGINS SIN TAPA.**



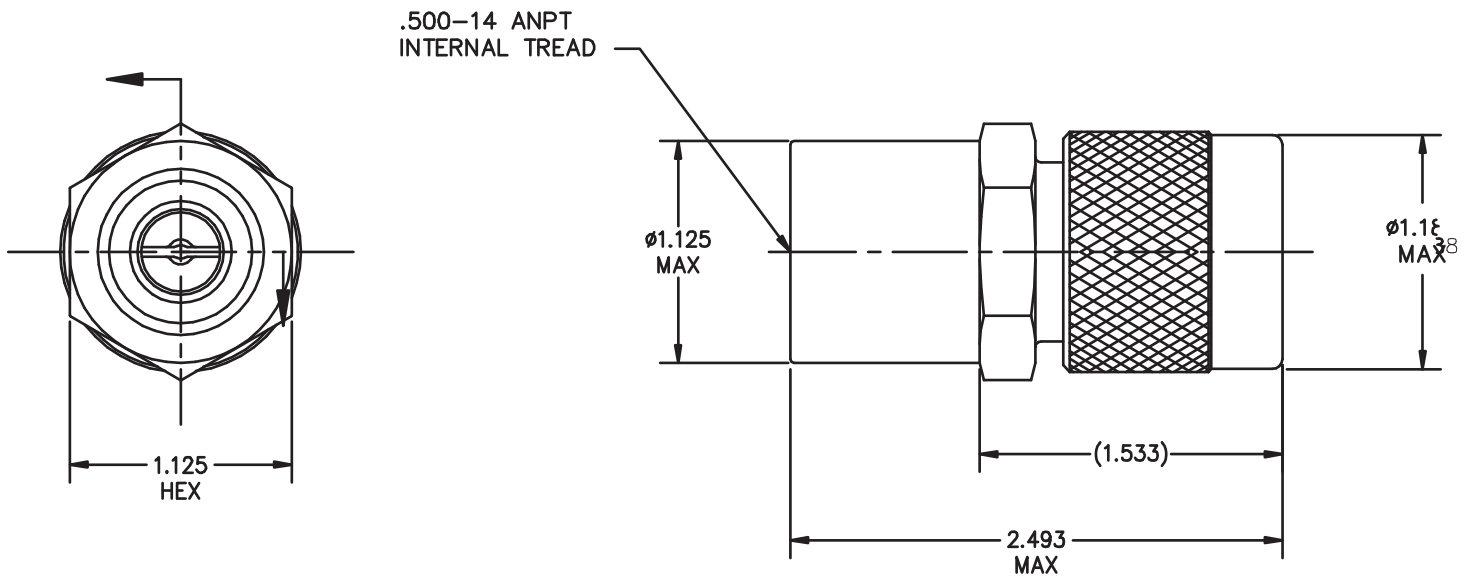


.375-18NPT
INTERNAL THREAD



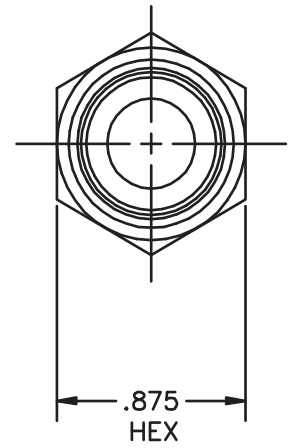
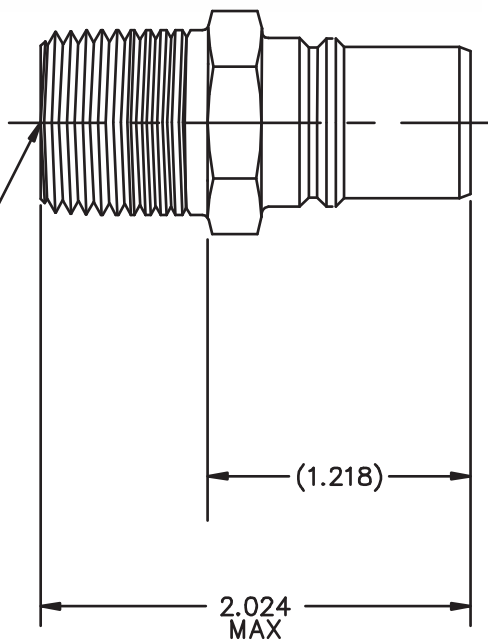
**PISTOLA ACEITE TRANSMISION
WIGGINS SIN TAPA.**





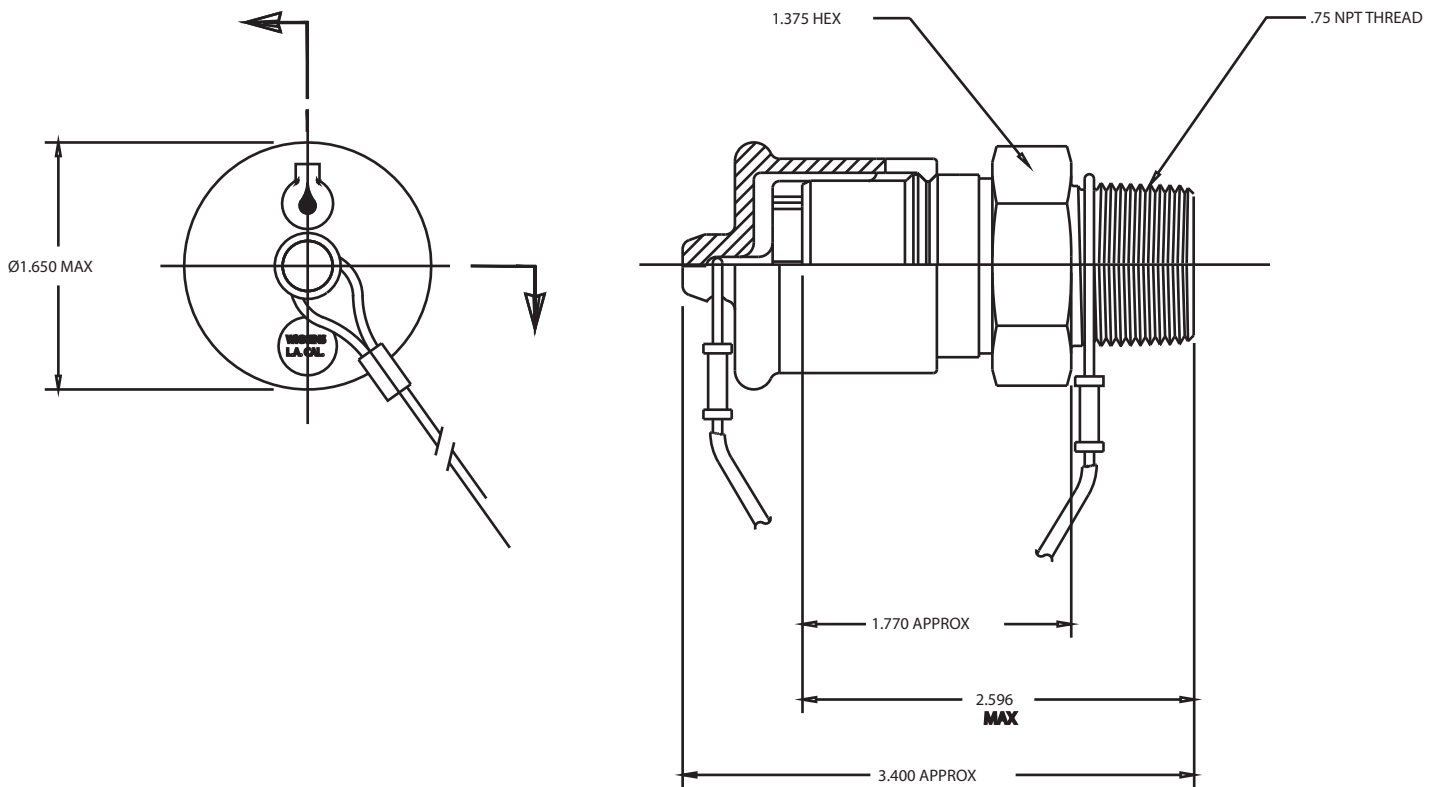
**RECEPTOR FLUIDO HIDRAULICO
WIGGINS SIN TAPA.**





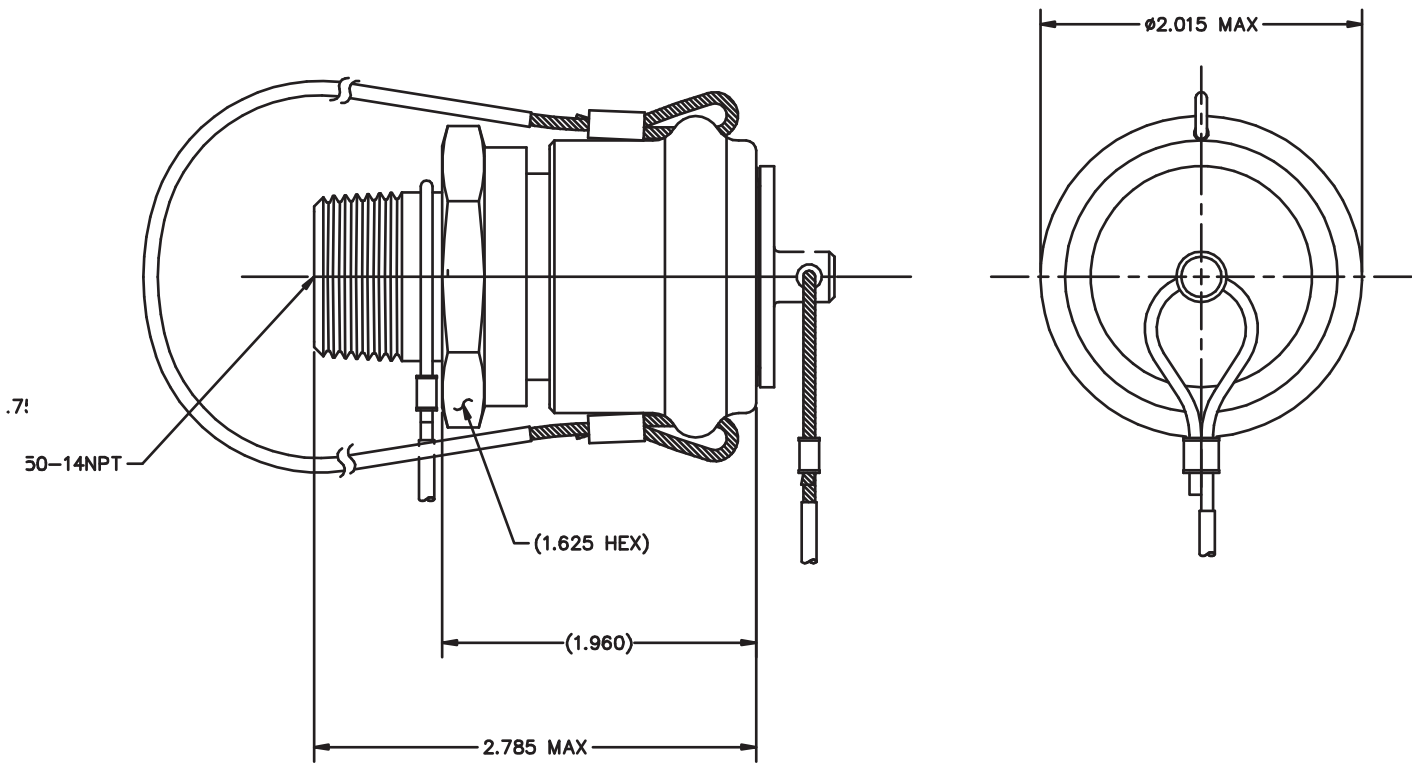
**RECEPTOR FLUIDO REFRIGERANTE
WIGGINS SIN TAPA.**





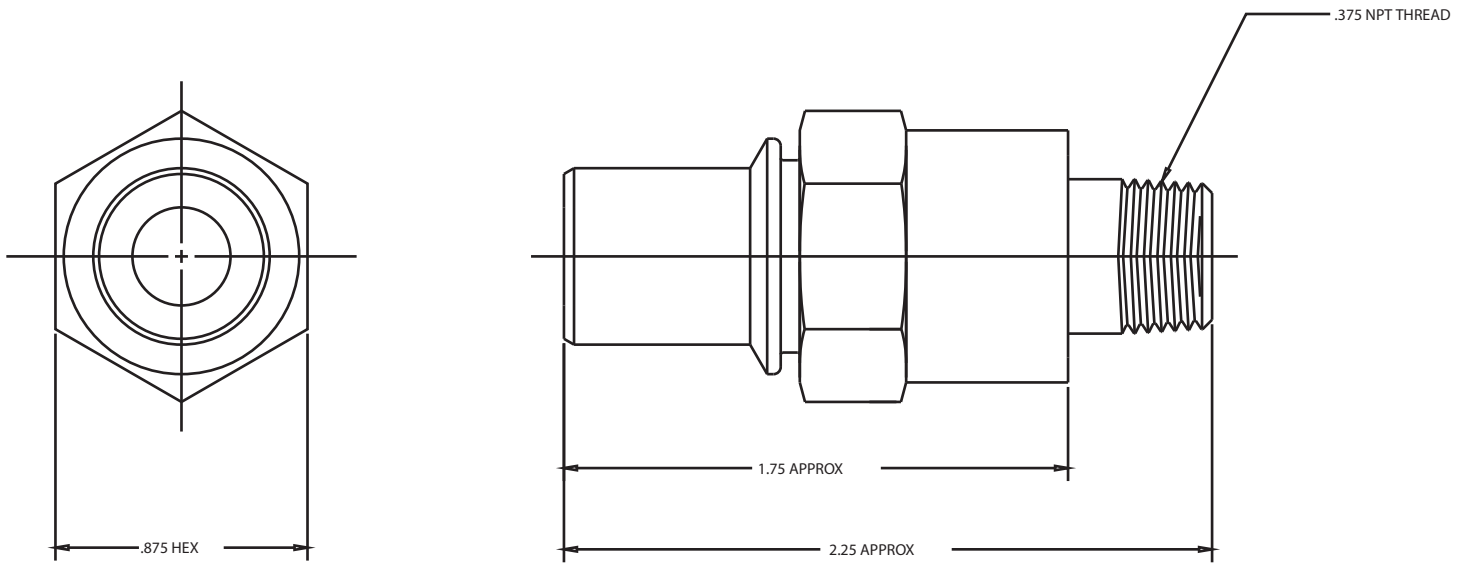
**RECEPTOR ACEITE MOTOR
WIGGINS CON TAPA.**





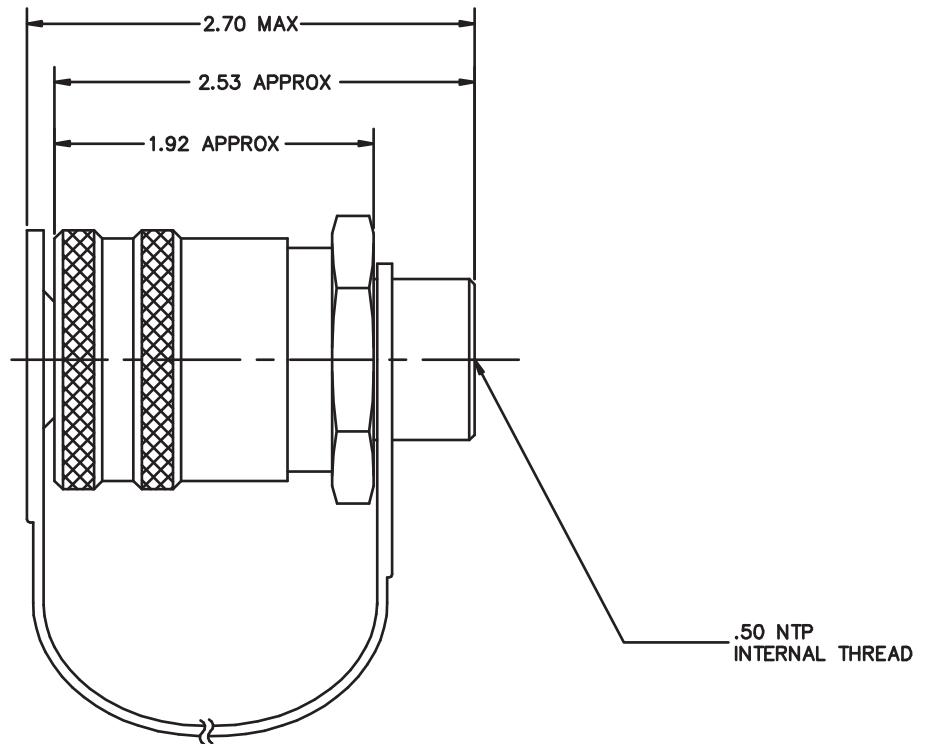
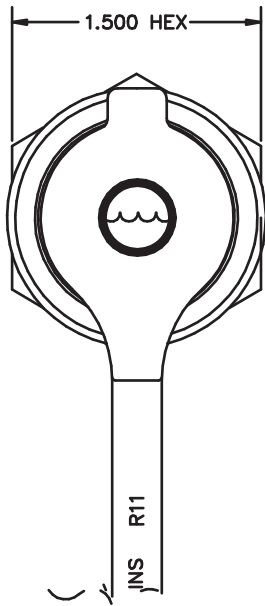
**PISTOLA ACEITE MOTOR
WIGGINS CON TAPA CAMBIAR.**





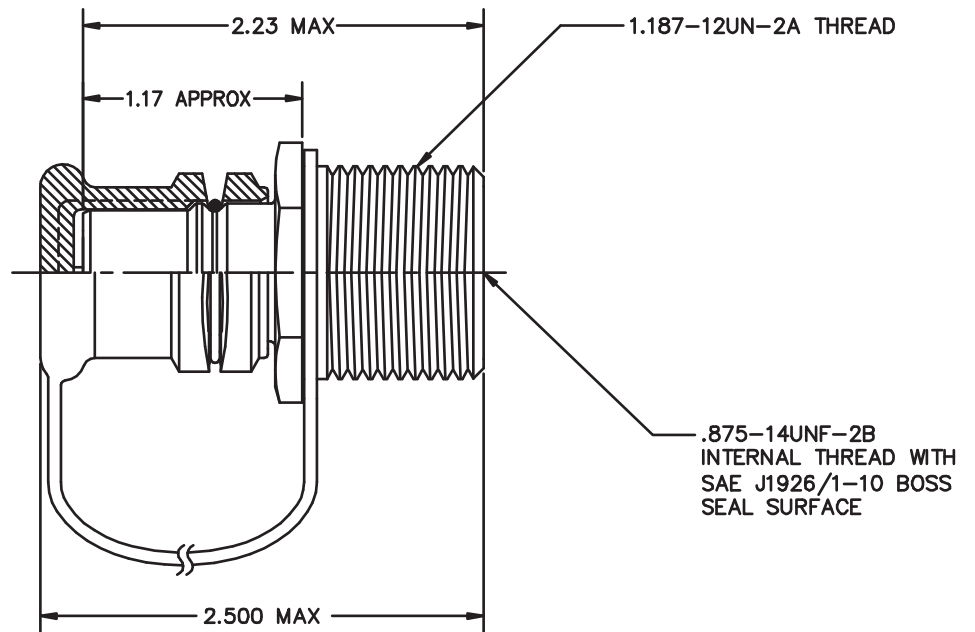
**RECEPTOR FLUIDO TRANSMISION
WIGGINS SIN TAPA.**





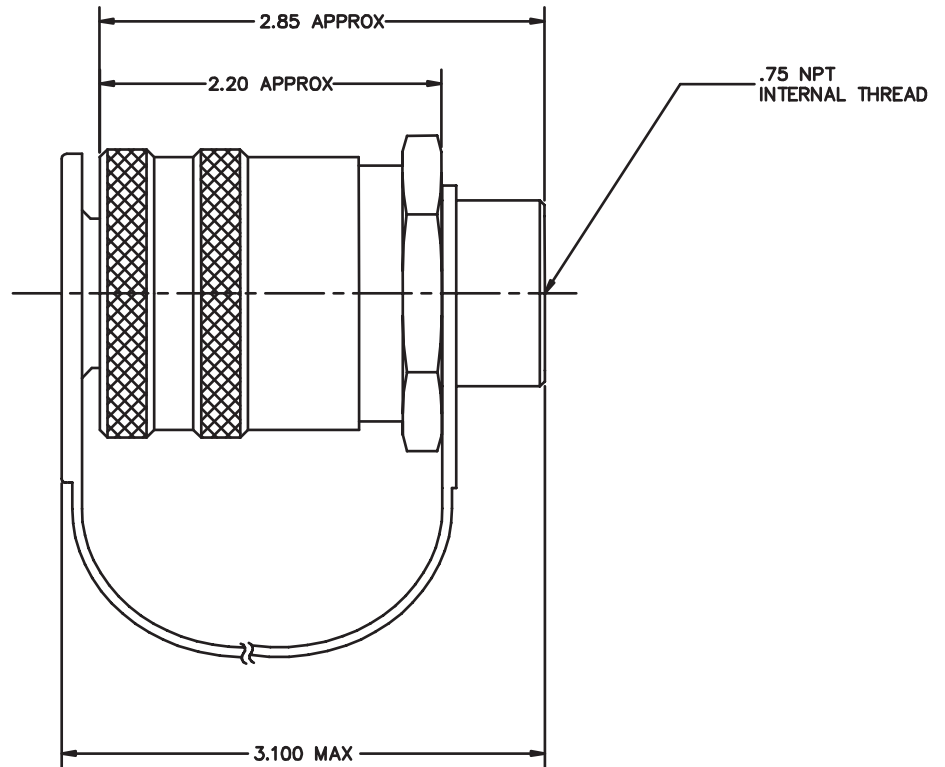
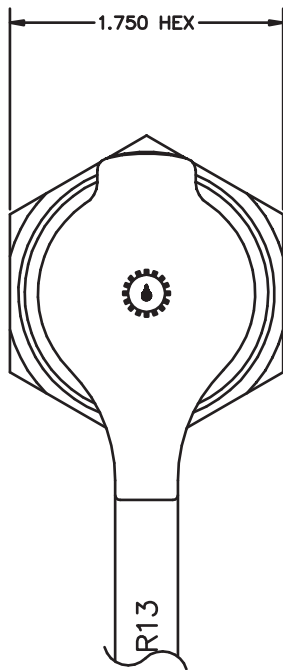
**PISTOLA SISTEMA R WIGGINS FLUIDO
REFRIGERANTE CON TAPA.**





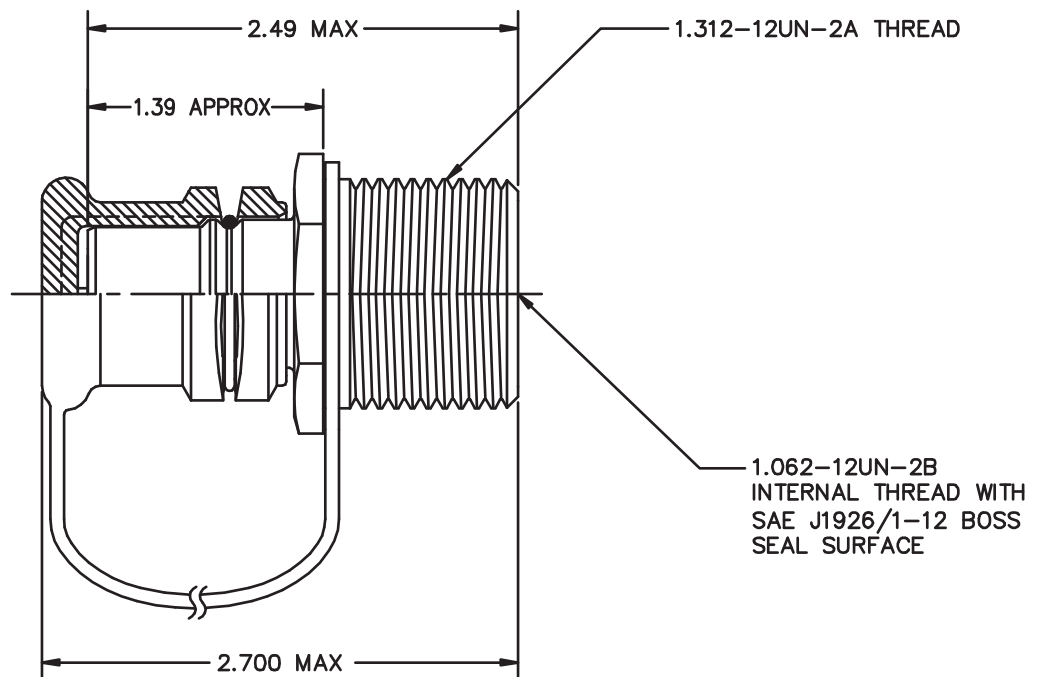
**RECEPTOR SISTEMA R WIGGINS FLUIDO
REFRIGERANTE CON TAPA.**





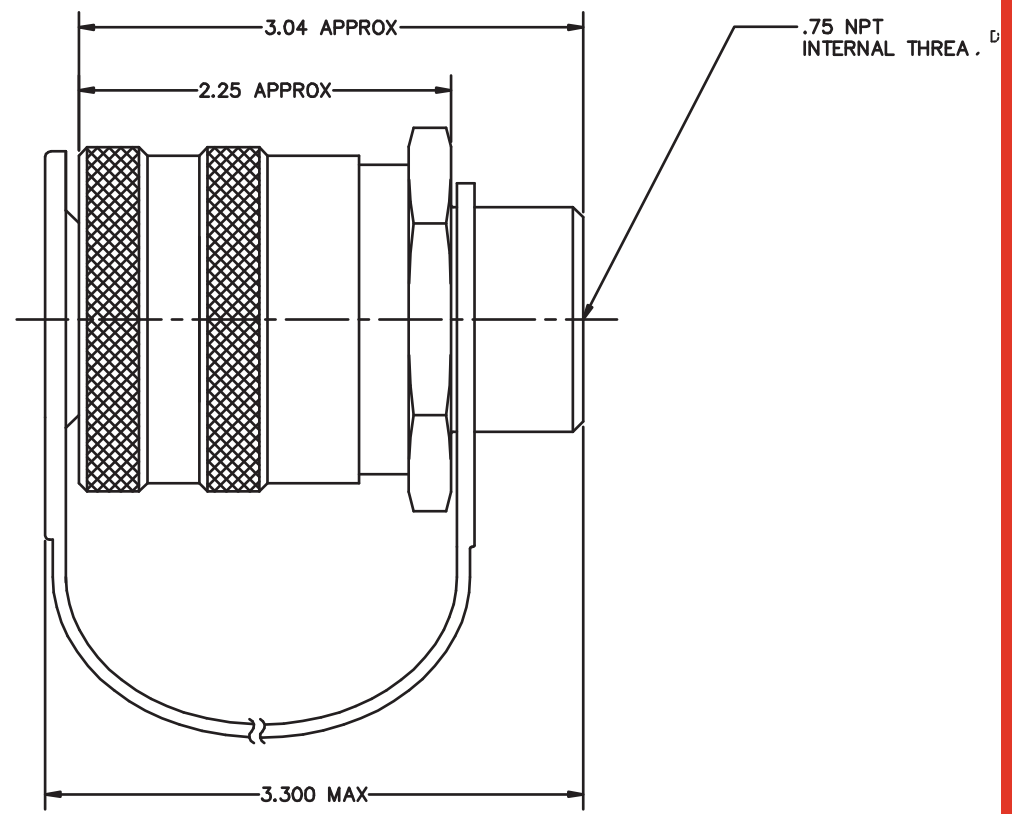
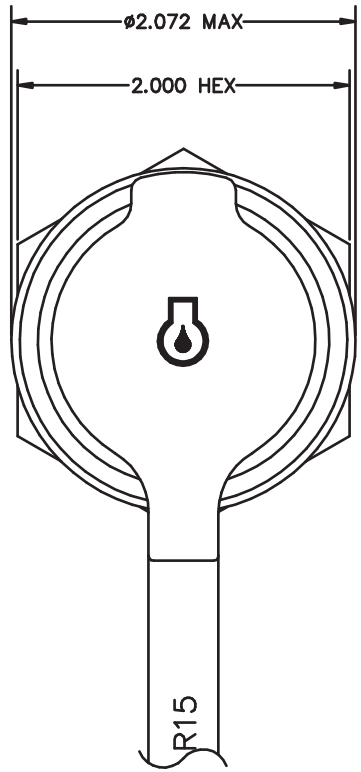
**PISTOLA SISTEMA R WIGGINS FLUIDO
TRANSMISION CON TAPA.**





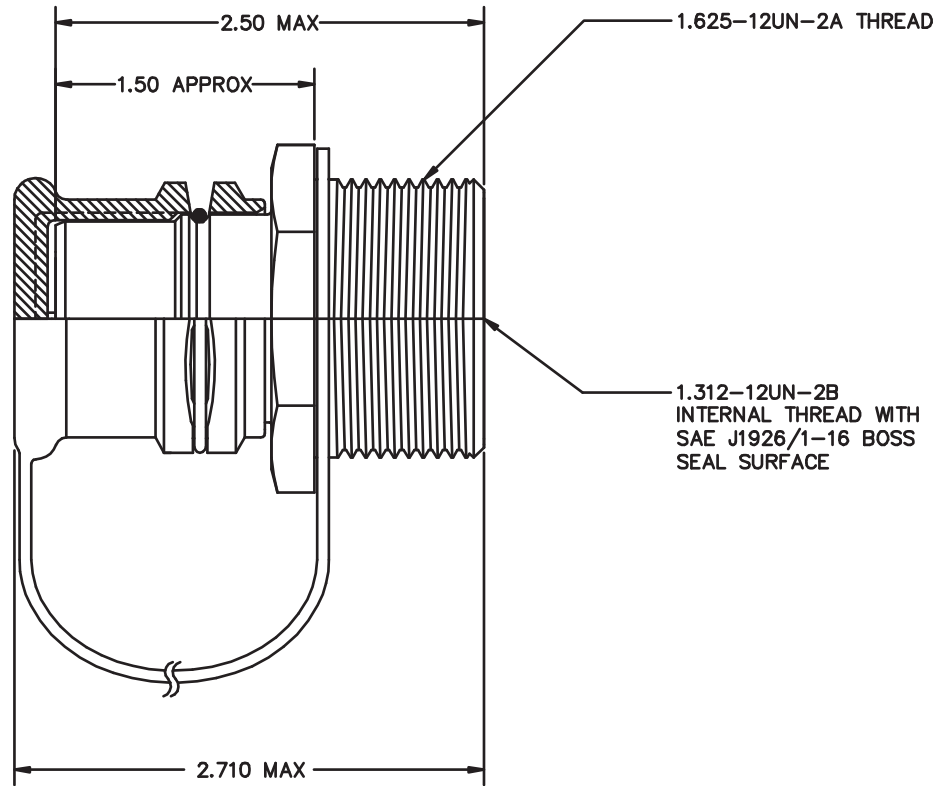
**RECEPTOR SISTEMA R WIGGINS FLUIDO
TRANSMISION CON TAPA.**





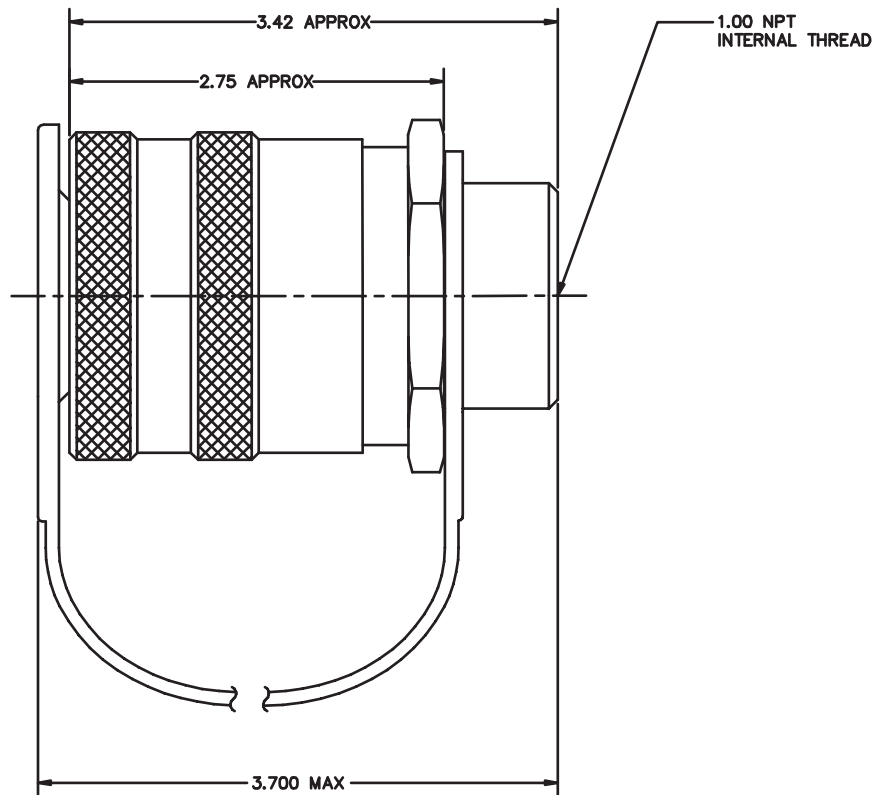
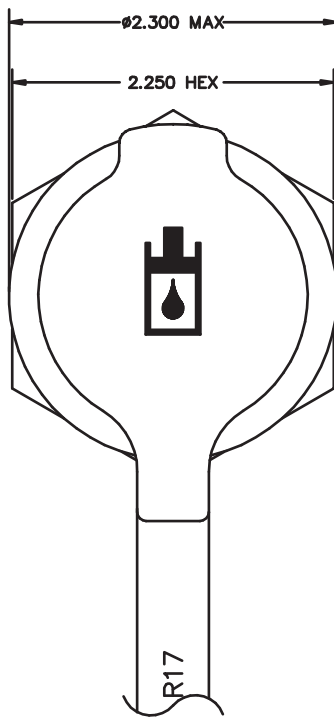
**PISTOLA SISTEMA R WIGGINS FLUIDO
ACEITE MOTOR CON TAPA.**





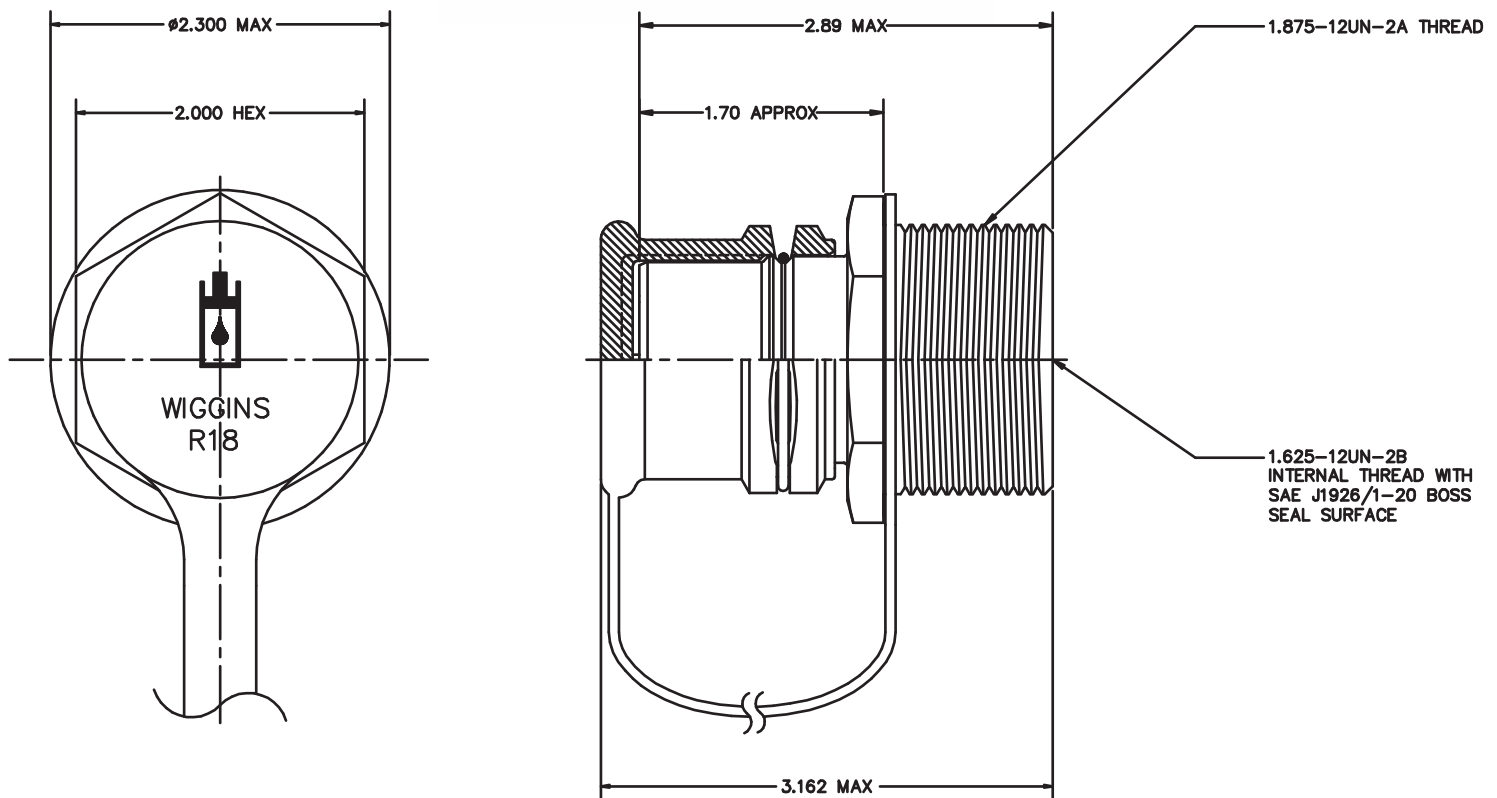
**RECEPTOR SISTEMA R WIGGINS FLUIDO
ACEITE MOTOR CON TAPA.**





**PISTOLA SISTEMA R WIGGINS FLUIDO
HIDRAULICO CON TAPA.**





**RECEPTOR SISTEMA R WIGGINS FLUIDO
HIDRAULICO CON TAPA.**





PETROMIN

20 años al servicio de la minería


Wiggins
Service System



 Curicó 110, Santiago, Chile.

 (56) 22634 - 7400.

 petromin@petromin.cl

 www.petromin.cl

